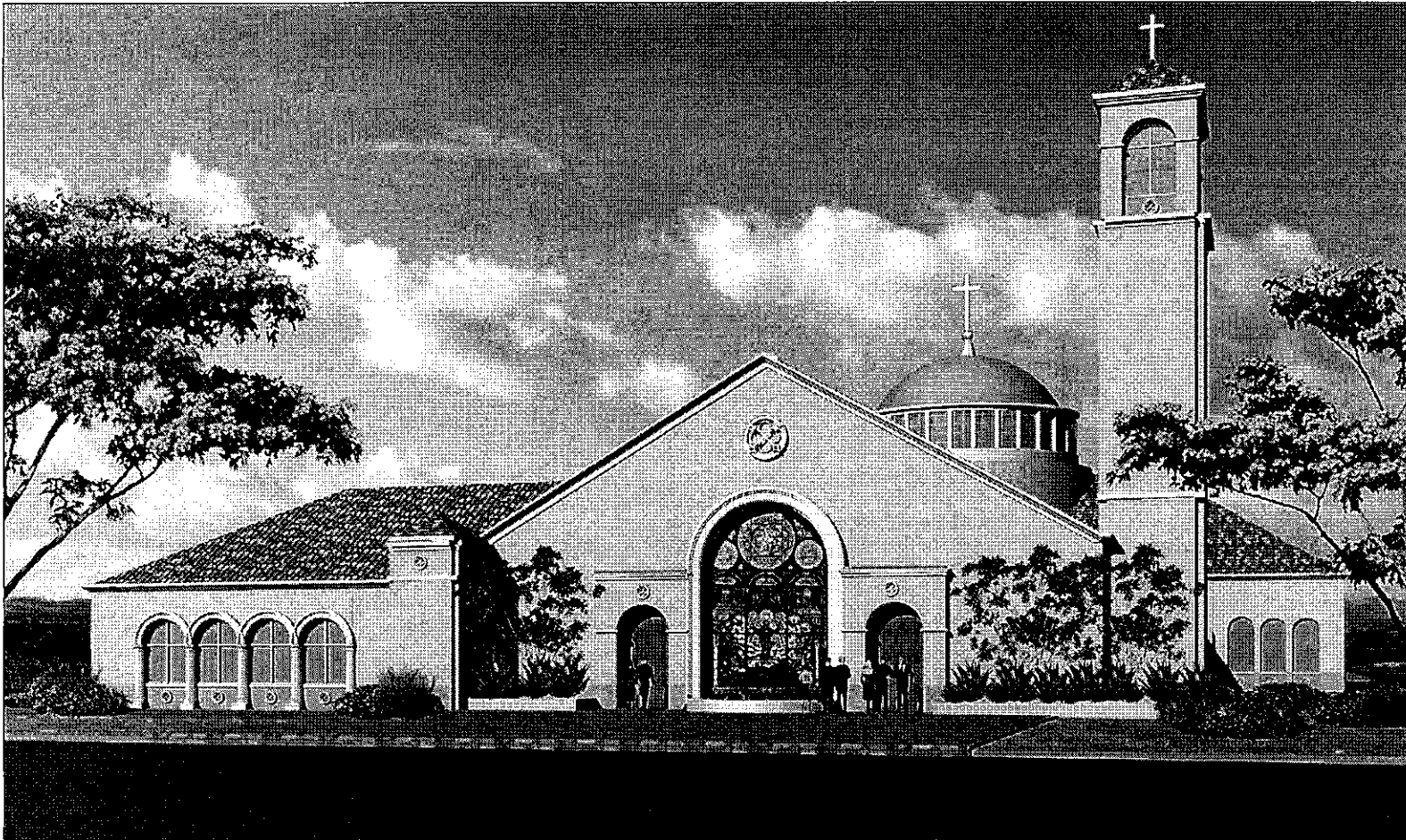


126 Post Street, 3rd Floor
 San Francisco, CA 94108
 T 415.775.8748
 F 415.775.8752



ST. PETER'S CATHOLIC CHURCH
 DIOCESE OF FRESNO
 LEMOORE, CALIFORNIA

ISSUE FOR SITE PLAN REVIEW
 OCTOBER 6TH, 2008

TENANT

ST. PETER'S
 CATHOLIC CHURCH
 LEMOORE AVENUE
 LEMOORE, CALIFORNIA

PROJECT

2196.01

Job #

COVER SHEET

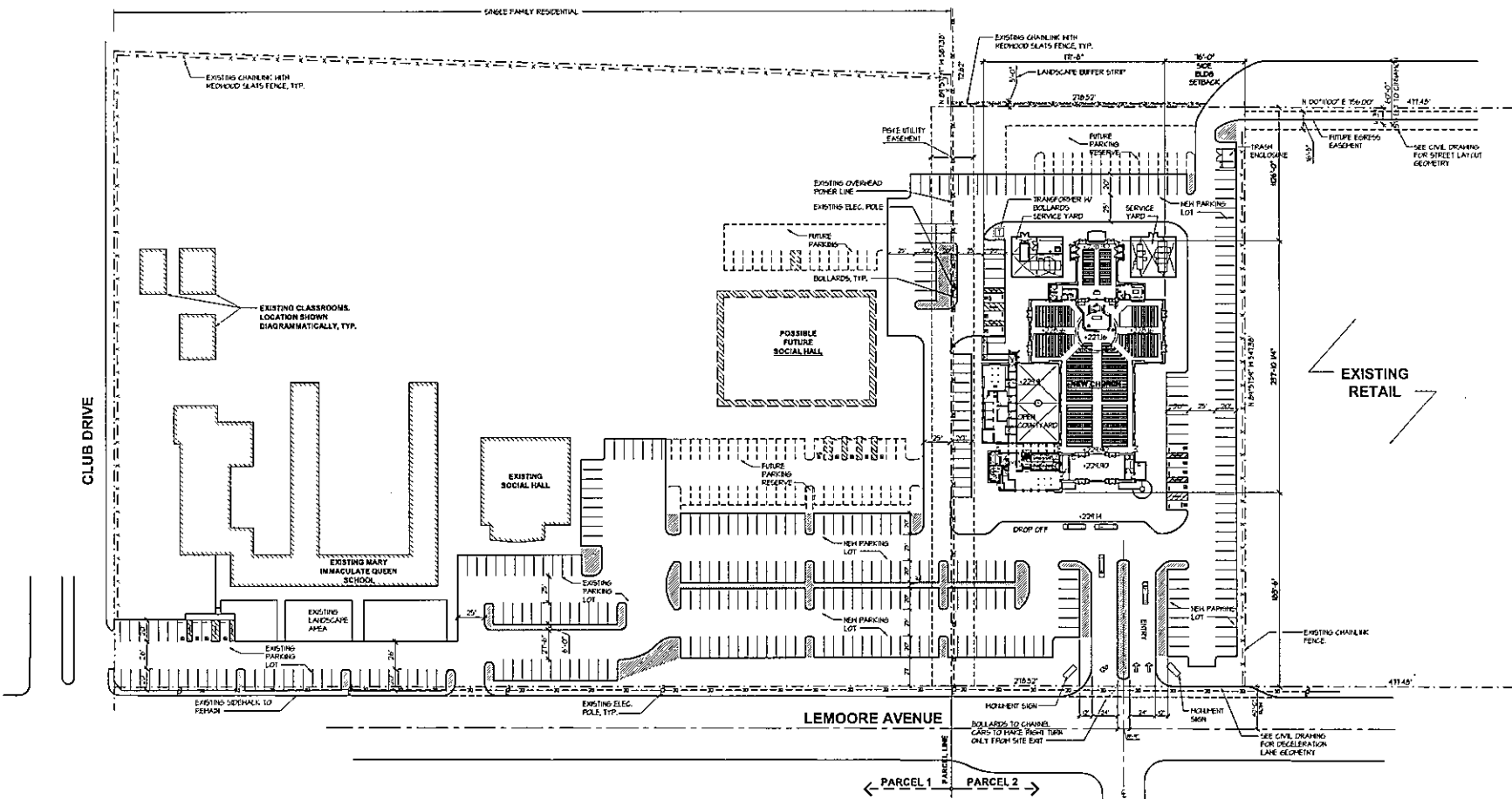
Sheet Name

Dates

Description	Date
RESPONSE TO PLANNING COMMENTS	7-16-08
ISSUE FOR SITE PLAN REVIEW	10-06-08



126 Post Street, 3rd Floor
 San Francisco, CA 94108
 T 415.775.8748
 F 415.775.8752



TENANT

ST. PETER'S CATHOLIC CHURCH
 LEMOORE AVENUE
 LEMOORE, CALIFORNIA

2196.01 Job #

OVERALL SITE PLAN Sheet Name

Dates

RESPONSE TO PLANNING COMMENTS	DATE
ISSUE FOR SITE PLAN REVIEW	7-16-09
	10-05-09

Description Date

SITE PLAN
 SCALE: 1" = 40'

LANDSCAPE AREA DATA
PARCEL 1 466,912 SF (10.7 ACRE) LANDSCAPE AREA [EXCLUDES ASPHALT HARDSCAPE (61,755 SF), EXISTING BUILDINGS (34,743 SF) AND FUTURE PARKING (23,711 SF)] = 311,203 SF LANDSCAPE AREA IN PERCENTAGE WITHIN PARCEL 1 = 66.8% PARKING LOT AREA [ASPHALT HARDSCAPE (21,755 SF) PLUS ADJACENT LANDSCAPE "FINGERS" (7,340 SF)] = 47,415 SF PERCENTAGE OF LANDSCAPE WITHIN PARKING LOT AREA = 15%
PARCEL 2 62,351 SF (1.5 ACRE) LANDSCAPE AREA [EXCLUDES ASPHALT HARDSCAPE (68,018 SF), LANDSCAPE AROUND NEW CHURCH (5,350 SF) AND FUTURE PARKING (10,711 SF)] = 11,960 SF LANDSCAPE AREA IN PERCENTAGE WITHIN PARCEL 2 = 19% PARKING LOT AREA [ASPHALT HARDSCAPE (68,018 SF) PLUS ADJACENT LANDSCAPE "FINGERS" (5,652 SF)] = 13,750 SF PERCENTAGE OF LANDSCAPE WITHIN PARKING LOT AREA = 17%

BUILDING/PARKING DATA
PARKING ASSUMES SHARED PARKING BETWEEN THE SCHOOL & CHURCH REQUIRED TOTAL SITE PARKING AT 1:1 SPACE / 7.5 SEATS = 334 SPACES EXISTING 1 PROPOSED PARKING PROVIDED = 303 SPACES SEE SHEETS A2.0 AND A3.0 FOR MORE PARKING INFORMATION

SITE PLAN NOTES
1. SEE CIVIL, LANDSCAPE AND ELECTRICAL DRAWINGS FOR WORK NOT INDICATED HERE
2. SEE CIVIL DRAWINGS FOR OFF-SITE WORK SCOPE

GRAPHIC LEGEND	
	INDICATES PUBLIC UTILITY EASEMENT
	INDICATES AREA DESIGNATED AS LANDSCAPE "FINGERS" AT PARKING
	INDICATES EXISTING FENCE

A1.1.0

Sheet #

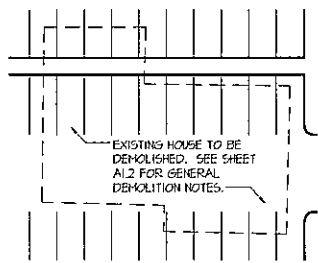
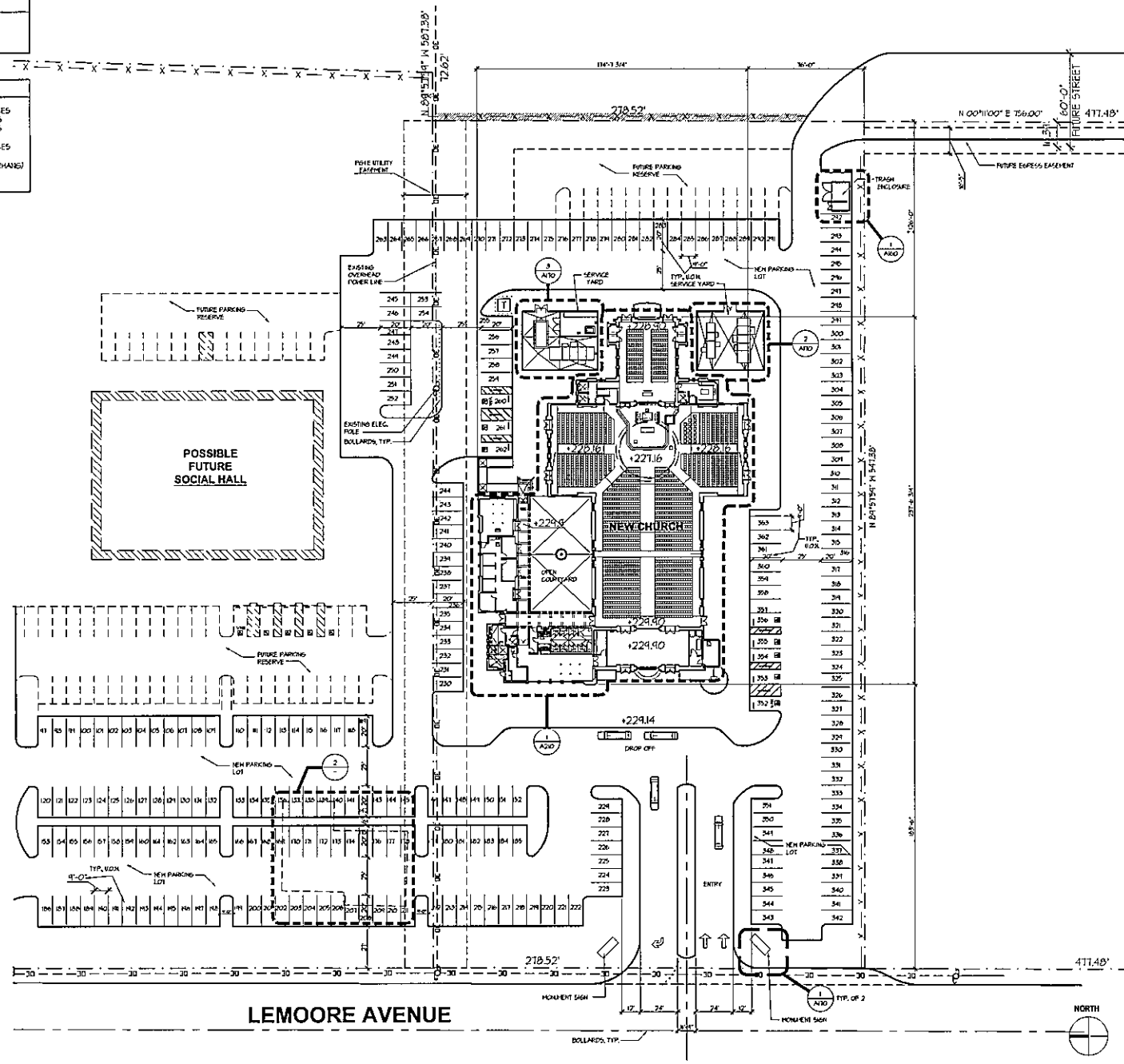
126 Post Street, 3rd Floor
 San Francisco, CA 94108
 T 415.775.8748
 F 415.775.8752

SITE PLAN NOTES
 1. SEE CIVIL, LANDSCAPING AND ELECTRICAL DRAWINGS FOR WORK NOT INDICATED HERE

PHASE II PARKING DATA

STANDARD PARKING SPACE	254 SPACES
ACCESSIBLE SPACES	6 SPACES
VAN ACCESSIBLE SPACES	2 SPACES
SUB TOTAL	267 SPACES

TYPICAL STANDARD PARKING STALL IS 9'-0" X 20'-0" (WITH NO OVERHANGS) AND 25' DRIVE ISLE WIDTH



ENLARGED DEMOLITION PLAN
 SCALE: 1/8" = 1'-0"

ENLARGED PHASE II SITE AND PARKING PLAN
 SCALE: 1/8" = 1'-0"

TENANT

ST. PETER'S CATHOLIC CHURCH
 LEMOORE AVENUE
 LEMOORE, CALIFORNIA

PROJECT

2196.01 Job #

PHASE II SITE PARKING PLAN Sheet Name

Dates

RESPONSE TO PLANNING COMMENTS	7-16-08
ISSUE FOR SITE PLAN REVIEW	10-06-08

Description Date

TENANT

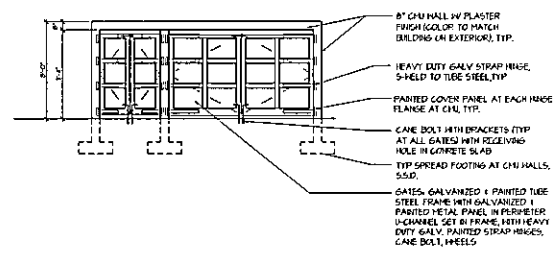
PROJECT

Job #

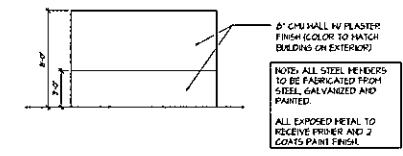
Sheet Name

Date

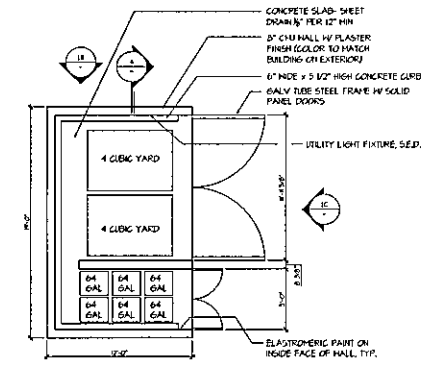
Sheet #



TRASH ENCLOSURE FRONT ELEVATION (C)

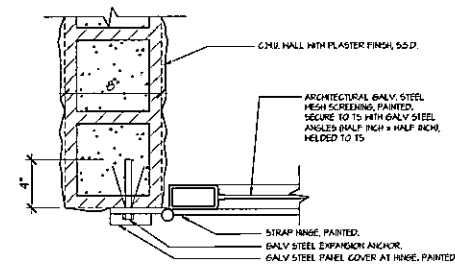


TRASH ENCLOSURE SIDE ELEVATION (B)

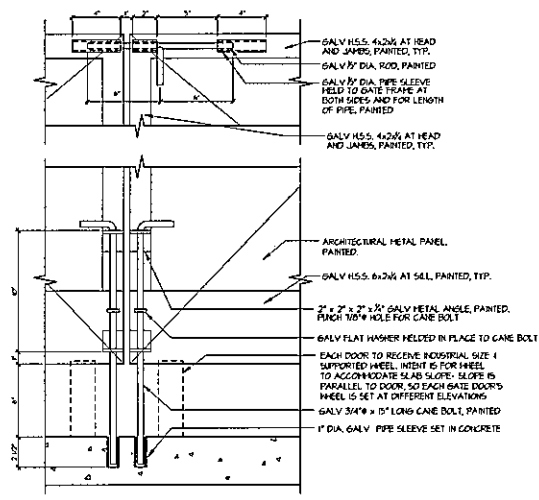


TRASH ENCLOSURE PLAN (A)

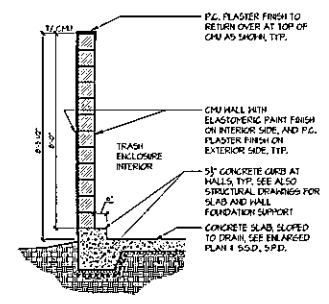
TRASH ENCLOSURE PLAN (1)
SCALE: 1/4" = 1'-0"



JAMB AT TRASH ENCLOSURE GATE (3)
SCALE: 3/4" = 1'-0"



GATE PARTIAL ELEVATION (2)
SCALE: 3/4" = 1'-0"



SECTION AT TRASH ENCLOSURE WALL (4)
SCALE: 1/2" = 1'-0"

TENANT

ST. PETER'S
 CATHOLIC CHURCH
 LEMOORE AVENUE
 LEMOORE, CALIFORNIA

PROJECT

2196.01

Job #

SERVICE YARD
 AND MONUMENT
 SIGN

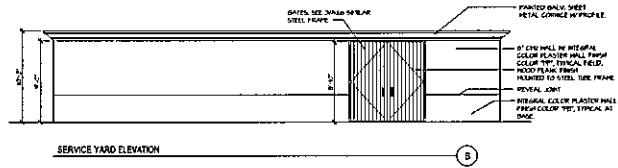
Sheet Name

Dates

RESPONSE TO
 PLANNING COMMENTS 7-16-08

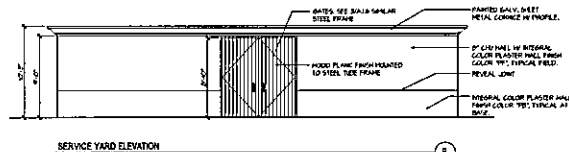
ISSUE FOR SITE PLAN REVIEW 10-06-08

Description Date



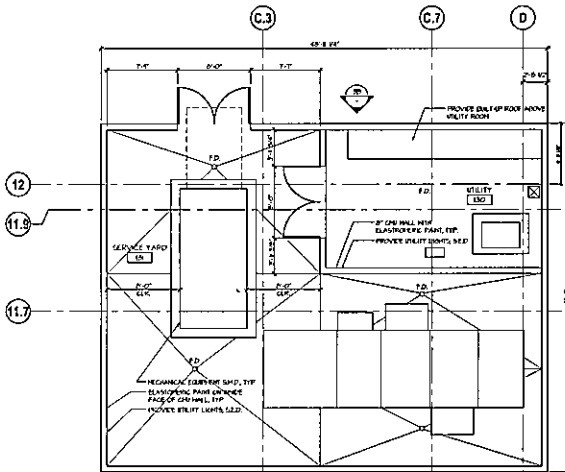
SERVICE YARD ELEVATION

B



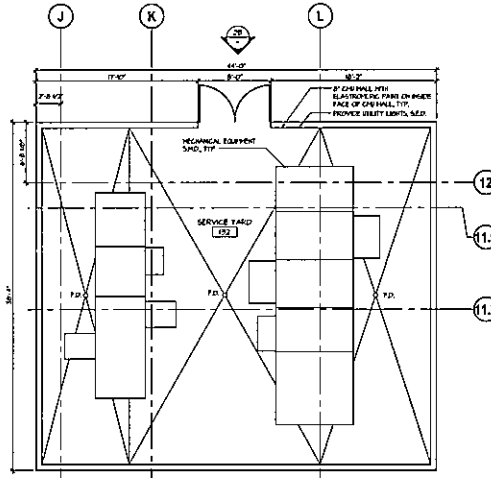
SERVICE YARD ELEVATION

B



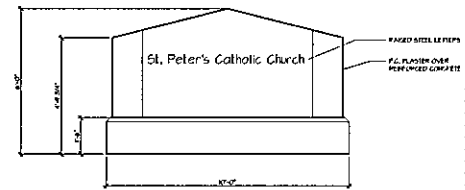
SERVICE YARD PLAN

A



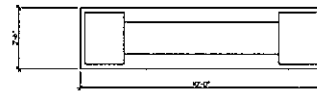
MECHANICAL SERVICE YARD PLAN

A



MONUMENT SIGN ELEVATION

B



MONUMENT SIGN PLAN

A

UTILITY 130 AND MECHANICAL SERVICE YARD 131
 SCALE: 1/4" = 1'-0"

3

MECHANICAL SERVICE YARD 132
 SCALE: 1/4" = 1'-0"

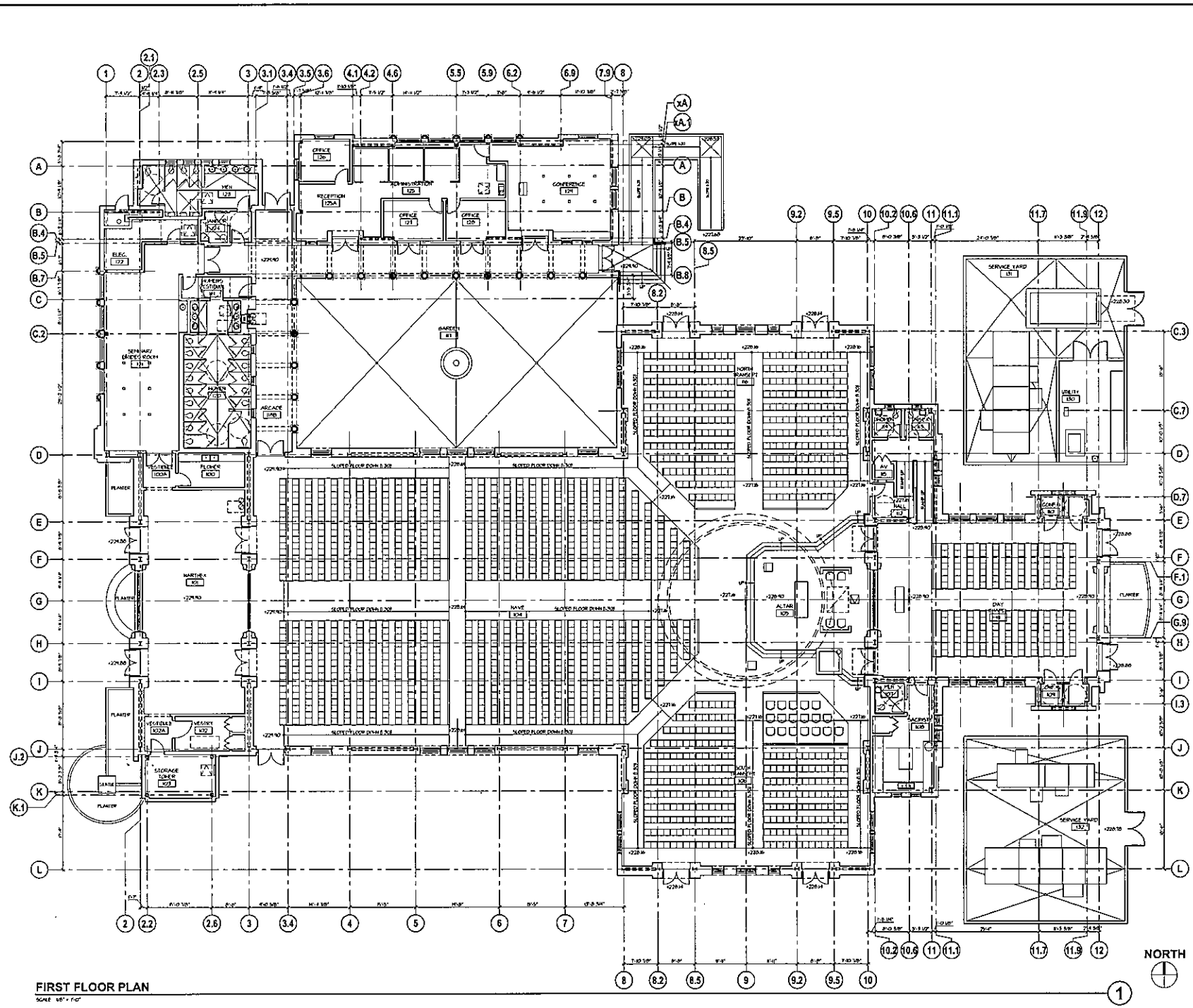
2

MONUMENT SIGN
 SCALE: 1/2" = 1'-0"

1



126 Post Street, 3rd Floor
 San Francisco, CA 94108
 T 415.775.8748
 F 415.775.8752



FIRST FLOOR PLAN
 SCALE: 1/8" = 1'-0"

TENANT

ST. PETER'S CATHOLIC CHURCH
 LENOORE AVENUE
 LENOORE, CALIFORNIA

2196.01

FIRST FLOOR PLAN

Dates

RESPONSE TO PLANNING COMMENTS 7-16-08
 ISSUE FOR SITE PLAN REVIEW 10-05-08

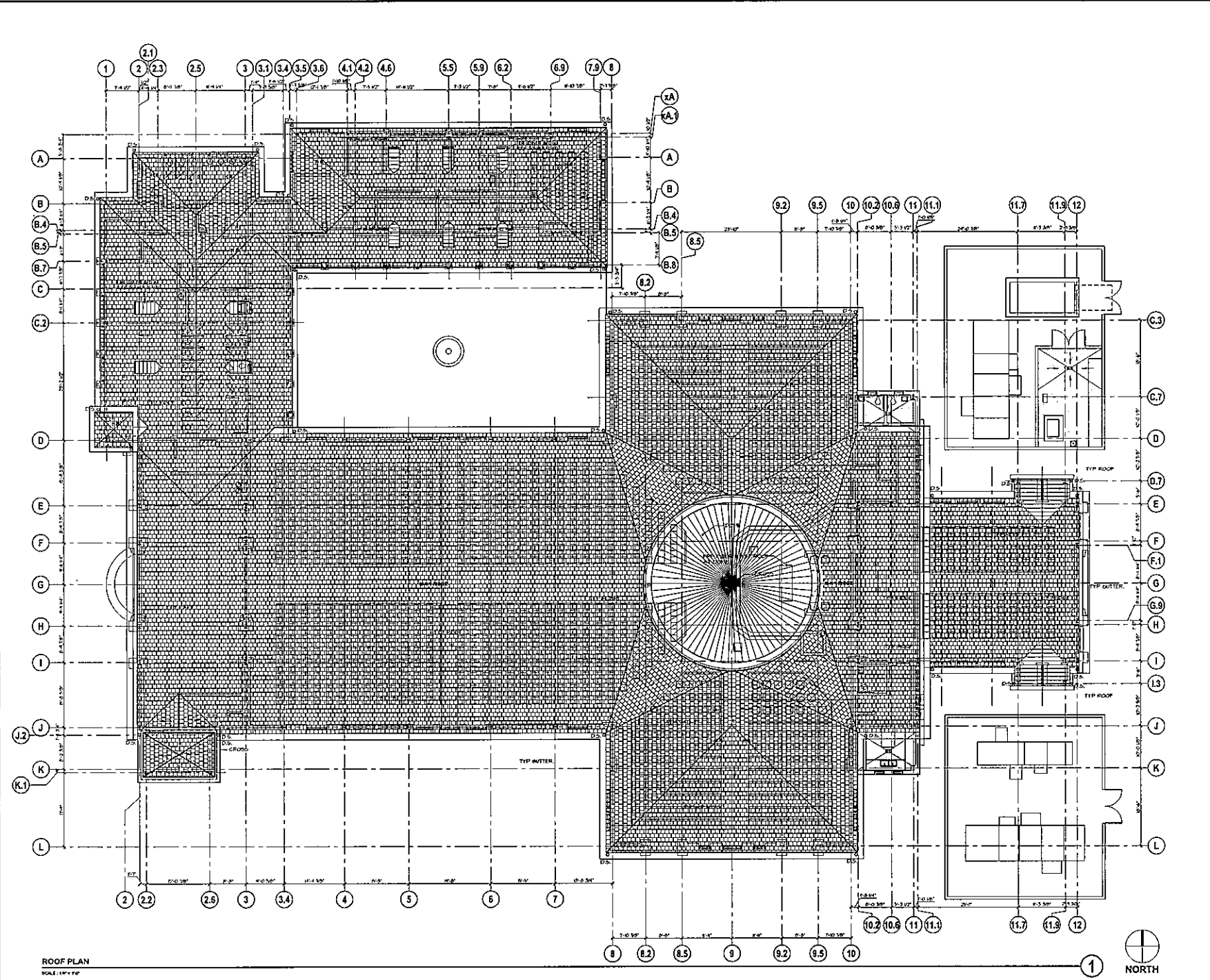
Description Date

A2.1.0

Sheet #



126 Post Street, 3rd Floor
 San Francisco, CA 94108
 T 415.775.8748
 F 415.775.8752



ROOF PLAN
 SCALE 1/8" = 1'-0"

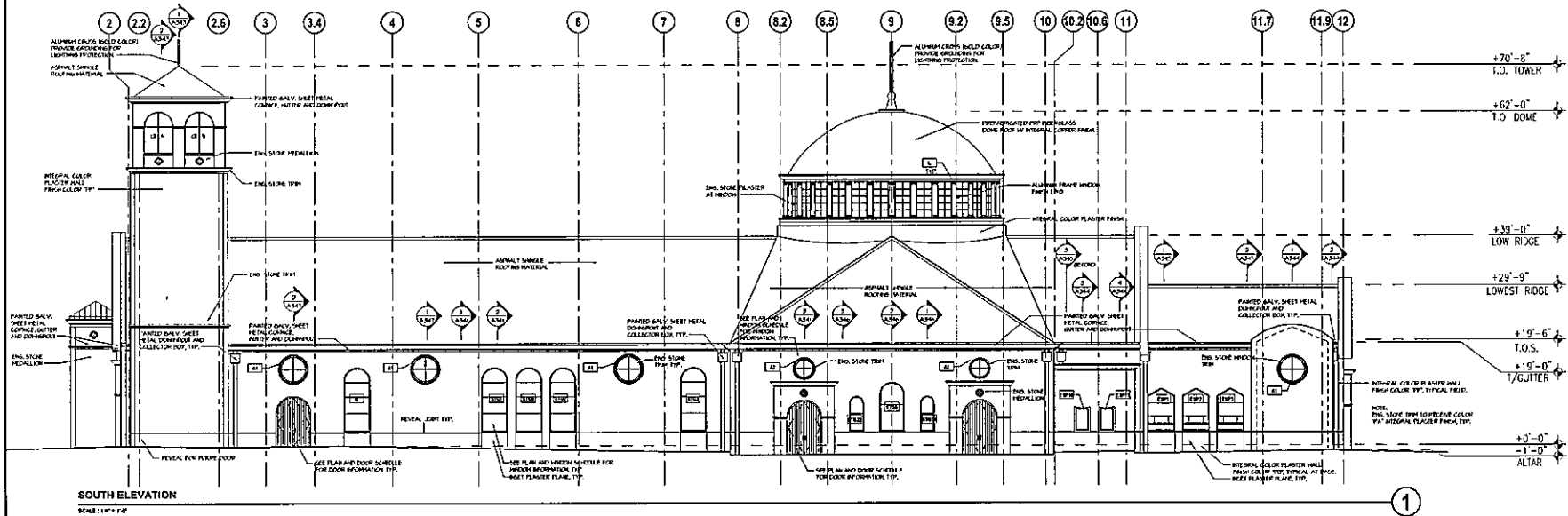
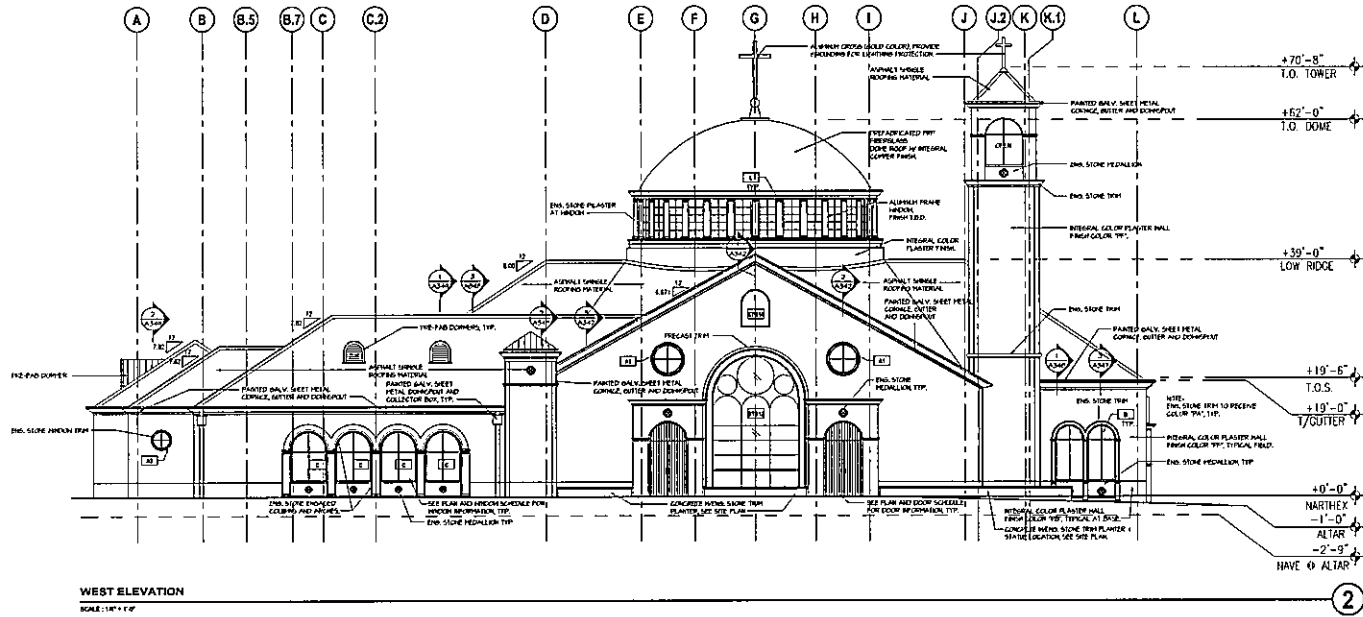
TENANT	
PROJECT	ST. PETER'S CATHOLIC CHURCH LEMOORE AVENUE LEMOORE, CALIFORNIA
Job #	2196.01
Sheet Name	ROOF PLAN
Dates	
	RESPONSE TO PLANNING COMMENTS 7-18-08
	ISSUE FOR SITE PLAN REVIEW 10-05-08
Description	Date

A2.2.0

Sheet #



126 Post Street, 3rd Floor
 San Francisco, CA 94108
 T 4 1 5 . 7 7 5 . 8 7 4 8
 F 4 1 5 . 7 7 5 . 8 7 5 2



TENANT

PROJECT

ST. PETER'S
 CATHOLIC CHURCH
 LEMOORE AVENUE
 LEMOORE, CALIFORNIA

2196.01

Job #

EXTERIOR
 ELEVATIONS

Sheet Name

Dates

RESPONSE TO
 PLANNING COMMENTS 7-18-08

ISSUE FOR SITE PLAN REVIEW 10-08-08

Description

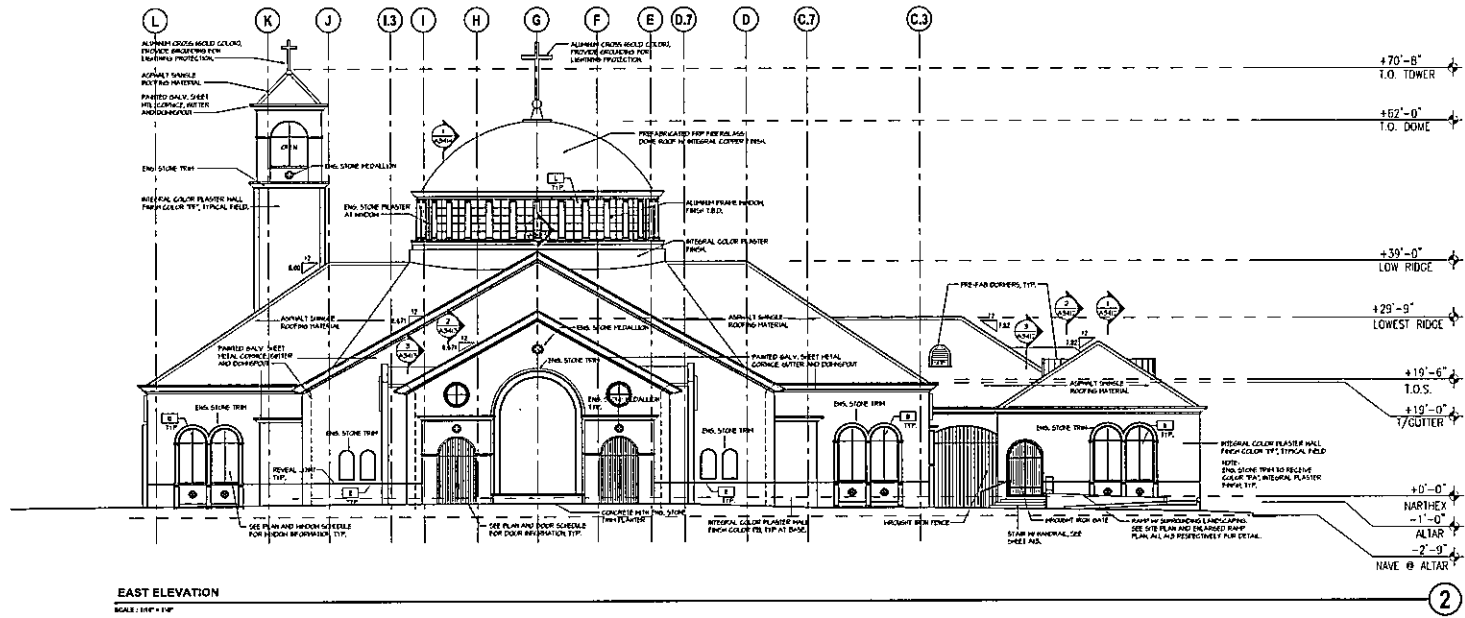
Date

A3.1.1

Sheet #



126 Post Street, 3rd Floor
 San Francisco, CA 94108
 T 4 1 5 . 7 7 5 . 8 7 4 8
 F 4 1 5 . 7 7 5 . 8 7 5 2



ST. PETER'S
 CATHOLIC CHURCH
 LEMOORE AVENUE
 LEMOORE, CALIFORNIA

2196.01

Job #

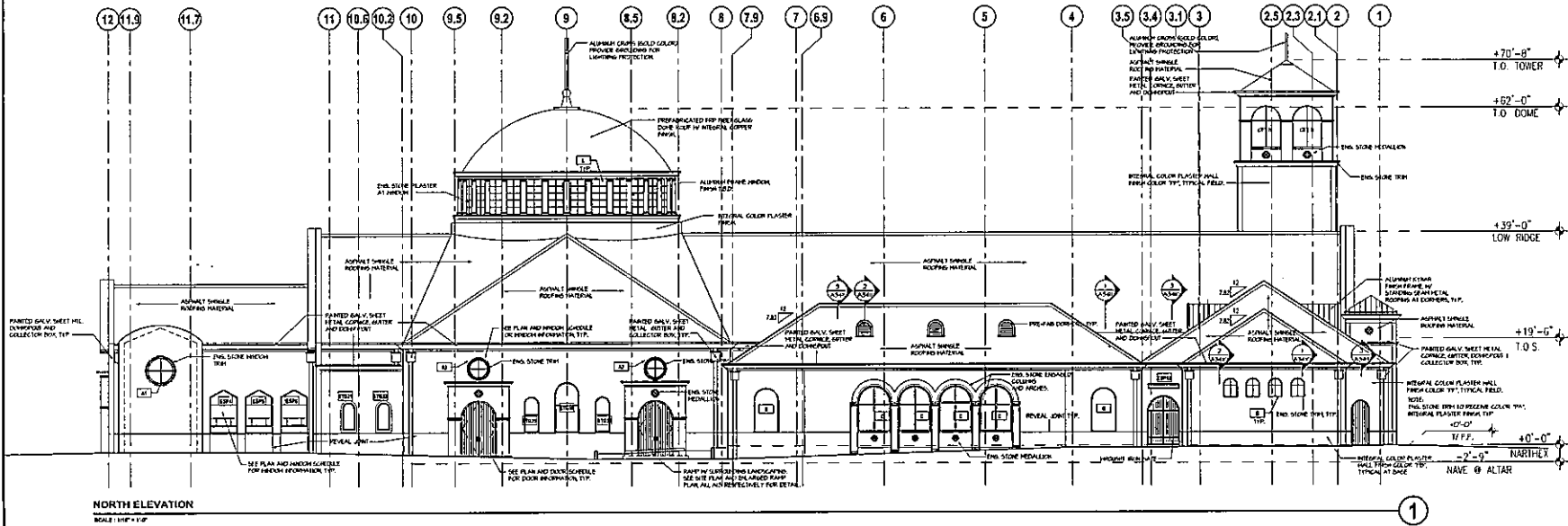
EXTERIOR
 ELEVATIONS

Sheet Name

Dates

RESPONSE TO
 PLANNING COMMENTS 7-18-09
 ISSUE FOR SITE PLAN REVIEW 10-26-08

Description Data



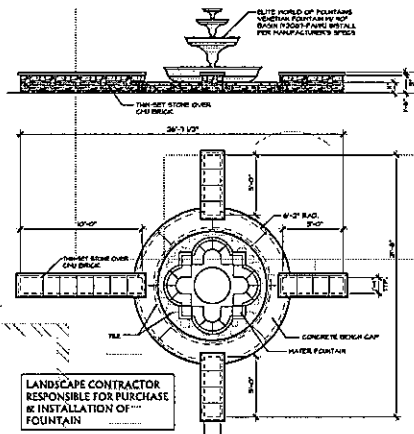
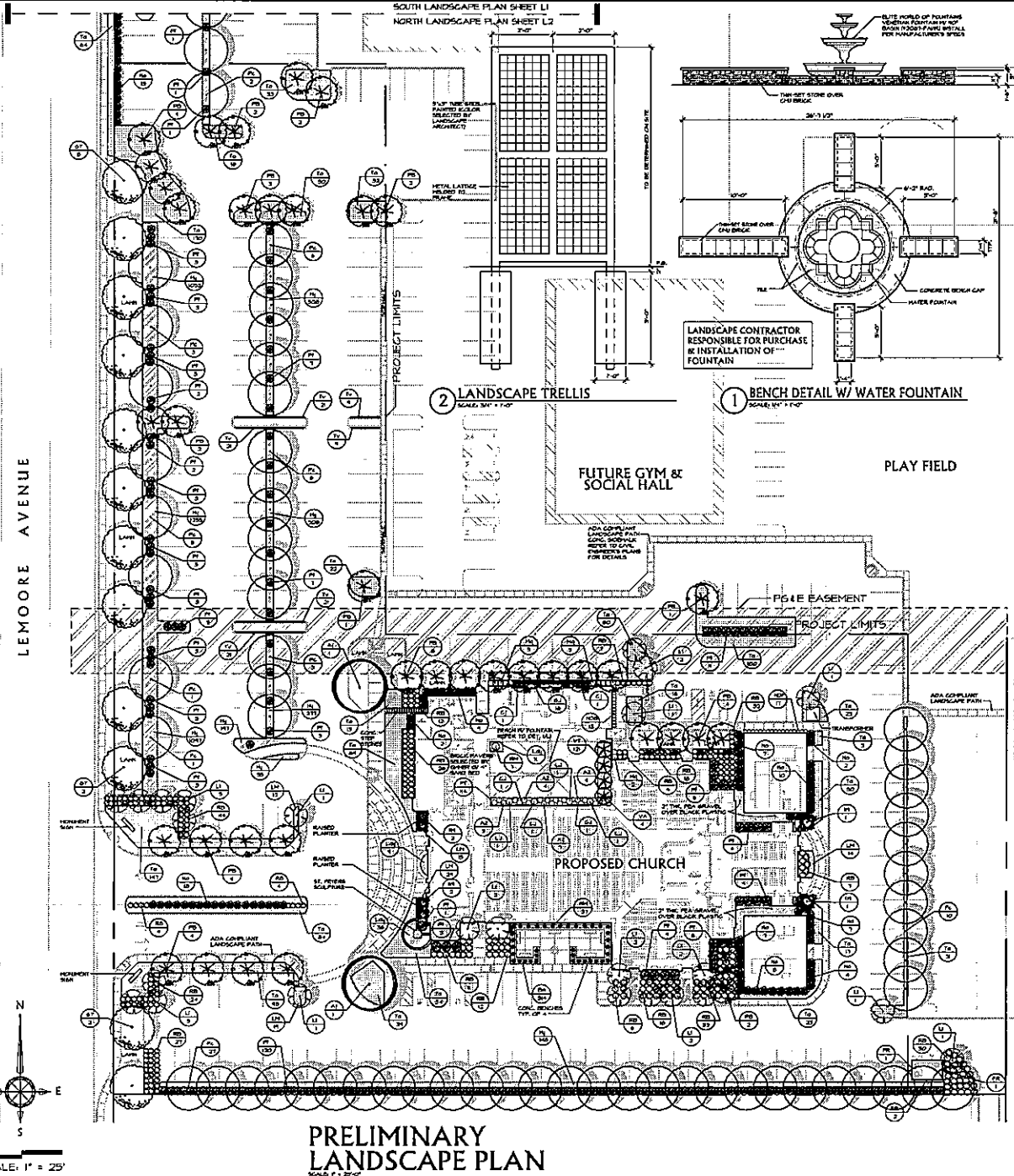
A3.1.2

Sheet #

Benchmark
 City of Lemoore Benchmark 202 - Survey nail to top of curb at the east end of an adjacent portion of Cinnammon Dr. and 10th St.
 Dm. = 226.72

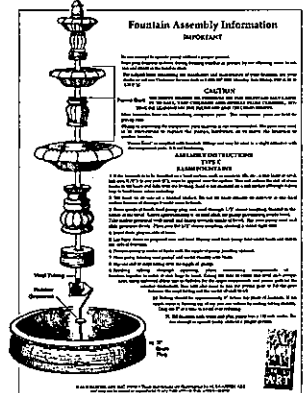
Site Benchmark
 1007.74, 1007.98, 1008.01, 1008.04, 1008.07, 1008.10, 1008.13, 1008.16, 1008.19, 1008.22, 1008.25, 1008.28, 1008.31, 1008.34, 1008.37, 1008.40, 1008.43, 1008.46, 1008.49, 1008.52, 1008.55, 1008.58, 1008.61, 1008.64, 1008.67, 1008.70, 1008.73, 1008.76, 1008.79, 1008.82, 1008.85, 1008.88, 1008.91, 1008.94, 1008.97, 1009.00, 1009.03, 1009.06, 1009.09, 1009.12, 1009.15, 1009.18, 1009.21, 1009.24, 1009.27, 1009.30, 1009.33, 1009.36, 1009.39, 1009.42, 1009.45, 1009.48, 1009.51, 1009.54, 1009.57, 1009.60, 1009.63, 1009.66, 1009.69, 1009.72, 1009.75, 1009.78, 1009.81, 1009.84, 1009.87, 1009.90, 1009.93, 1009.96, 1009.99, 1010.02, 1010.05, 1010.08, 1010.11, 1010.14, 1010.17, 1010.20, 1010.23, 1010.26, 1010.29, 1010.32, 1010.35, 1010.38, 1010.41, 1010.44, 1010.47, 1010.50, 1010.53, 1010.56, 1010.59, 1010.62, 1010.65, 1010.68, 1010.71, 1010.74, 1010.77, 1010.80, 1010.83, 1010.86, 1010.89, 1010.92, 1010.95, 1010.98, 1011.01, 1011.04, 1011.07, 1011.10, 1011.13, 1011.16, 1011.19, 1011.22, 1011.25, 1011.28, 1011.31, 1011.34, 1011.37, 1011.40, 1011.43, 1011.46, 1011.49, 1011.52, 1011.55, 1011.58, 1011.61, 1011.64, 1011.67, 1011.70, 1011.73, 1011.76, 1011.79, 1011.82, 1011.85, 1011.88, 1011.91, 1011.94, 1011.97, 1012.00, 1012.03, 1012.06, 1012.09, 1012.12, 1012.15, 1012.18, 1012.21, 1012.24, 1012.27, 1012.30, 1012.33, 1012.36, 1012.39, 1012.42, 1012.45, 1012.48, 1012.51, 1012.54, 1012.57, 1012.60, 1012.63, 1012.66, 1012.69, 1012.72, 1012.75, 1012.78, 1012.81, 1012.84, 1012.87, 1012.90, 1012.93, 1012.96, 1012.99, 1013.02, 1013.05, 1013.08, 1013.11, 1013.14, 1013.17, 1013.20, 1013.23, 1013.26, 1013.29, 1013.32, 1013.35, 1013.38, 1013.41, 1013.44, 1013.47, 1013.50, 1013.53, 1013.56, 1013.59, 1013.62, 1013.65, 1013.68, 1013.71, 1013.74, 1013.77, 1013.80, 1013.83, 1013.86, 1013.89, 1013.92, 1013.95, 1013.98, 1014.01, 1014.04, 1014.07, 1014.10, 1014.13, 1014.16, 1014.19, 1014.22, 1014.25, 1014.28, 1014.31, 1014.34, 1014.37, 1014.40, 1014.43, 1014.46, 1014.49, 1014.52, 1014.55, 1014.58, 1014.61, 1014.64, 1014.67, 1014.70, 1014.73, 1014.76, 1014.79, 1014.82, 1014.85, 1014.88, 1014.91, 1014.94, 1014.97, 1015.00, 1015.03, 1015.06, 1015.09, 1015.12, 1015.15, 1015.18, 1015.21, 1015.24, 1015.27, 1015.30, 1015.33, 1015.36, 1015.39, 1015.42, 1015.45, 1015.48, 1015.51, 1015.54, 1015.57, 1015.60, 1015.63, 1015.66, 1015.69, 1015.72, 1015.75, 1015.78, 1015.81, 1015.84, 1015.87, 1015.90, 1015.93, 1015.96, 1015.99, 1016.02, 1016.05, 1016.08, 1016.11, 1016.14, 1016.17, 1016.20, 1016.23, 1016.26, 1016.29, 1016.32, 1016.35, 1016.38, 1016.41, 1016.44, 1016.47, 1016.50, 1016.53, 1016.56, 1016.59, 1016.62, 1016.65, 1016.68, 1016.71, 1016.74, 1016.77, 1016.80, 1016.83, 1016.86, 1016.89, 1016.92, 1016.95, 1016.98, 1017.01, 1017.04, 1017.07, 1017.10, 1017.13, 1017.16, 1017.19, 1017.22, 1017.25, 1017.28, 1017.31, 1017.34, 1017.37, 1017.40, 1017.43, 1017.46, 1017.49, 1017.52, 1017.55, 1017.58, 1017.61, 1017.64, 1017.67, 1017.70, 1017.73, 1017.76, 1017.79, 1017.82, 1017.85, 1017.88, 1017.91, 1017.94, 1017.97, 1018.00, 1018.03, 1018.06, 1018.09, 1018.12, 1018.15, 1018.18, 1018.21, 1018.24, 1018.27, 1018.30, 1018.33, 1018.36, 1018.39, 1018.42, 1018.45, 1018.48, 1018.51, 1018.54, 1018.57, 1018.60, 1018.63, 1018.66, 1018.69, 1018.72, 1018.75, 1018.78, 1018.81, 1018.84, 1018.87, 1018.90, 1018.93, 1018.96, 1018.99, 1019.02, 1019.05, 1019.08, 1019.11, 1019.14, 1019.17, 1019.20, 1019.23, 1019.26, 1019.29, 1019.32, 1019.35, 1019.38, 1019.41, 1019.44, 1019.47, 1019.50, 1019.53, 1019.56, 1019.59, 1019.62, 1019.65, 1019.68, 1019.71, 1019.74, 1019.77, 1019.80, 1019.83, 1019.86, 1019.89, 1019.92, 1019.95, 1019.98, 1020.01, 1020.04, 1020.07, 1020.10, 1020.13, 1020.16, 1020.19, 1020.22, 1020.25, 1020.28, 1020.31, 1020.34, 1020.37, 1020.40, 1020.43, 1020.46, 1020.49, 1020.52, 1020.55, 1020.58, 1020.61, 1020.64, 1020.67, 1020.70, 1020.73, 1020.76, 1020.79, 1020.82, 1020.85, 1020.88, 1020.91, 1020.94, 1020.97, 1021.00, 1021.03, 1021.06, 1021.09, 1021.12, 1021.15, 1021.18, 1021.21, 1021.24, 1021.27, 1021.30, 1021.33, 1021.36, 1021.39, 1021.42, 1021.45, 1021.48, 1021.51, 1021.54, 1021.57, 1021.60, 1021.63, 1021.66, 1021.69, 1021.72, 1021.75, 1021.78, 1021.81, 1021.84, 1021.87, 1021.90, 1021.93, 1021.96, 1021.99, 1022.02, 1022.05, 1022.08, 1022.11, 1022.14, 1022.17, 1022.20, 1022.23, 1022.26, 1022.29, 1022.32, 1022.35, 1022.38, 1022.41, 1022.44, 1022.47, 1022.50, 1022.53, 1022.56, 1022.59, 1022.62, 1022.65, 1022.68, 1022.71, 1022.74, 1022.77, 1022.80, 1022.83, 1022.86, 1022.89, 1022.92, 1022.95, 1022.98, 1023.01, 1023.04, 1023.07, 1023.10, 1023.13, 1023.16, 1023.19, 1023.22, 1023.25, 1023.28, 1023.31, 1023.34, 1023.37, 1023.40, 1023.43, 1023.46, 1023.49, 1023.52, 1023.55, 1023.58, 1023.61, 1023.64, 1023.67, 1023.70, 1023.73, 1023.76, 1023.79, 1023.82, 1023.85, 1023.88, 1023.91, 1023.94, 1023.97, 1024.00, 1024.03, 1024.06, 1024.09, 1024.12, 1024.15, 1024.18, 1024.21, 1024.24, 1024.27, 1024.30, 1024.33, 1024.36, 1024.39, 1024.42, 1024.45, 1024.48, 1024.51, 1024.54, 1024.57, 1024.60, 1024.63, 1024.66, 1024.69, 1024.72, 1024.75, 1024.78, 1024.81, 1024.84, 1024.87, 1024.90, 1024.93, 1024.96, 1024.99, 1025.02, 1025.05, 1025.08, 1025.11, 1025.14, 1025.17, 1025.20, 1025.23, 1025.26, 1025.29, 1025.32, 1025.35, 1025.38, 1025.41, 1025.44, 1025.47, 1025.50, 1025.53, 1025.56, 1025.59, 1025.62, 1025.65, 1025.68, 1025.71, 1025.74, 1025.77, 1025.80, 1025.83, 1025.86, 1025.89, 1025.92, 1025.95, 1025.98, 1026.01, 1026.04, 1026.07, 1026.10, 1026.13, 1026.16, 1026.19, 1026.22, 1026.25, 1026.28, 1026.31, 1026.34, 1026.37, 1026.40, 1026.43, 1026.46, 1026.49, 1026.52, 1026.55, 1026.58, 1026.61, 1026.64, 1026.67, 1026.70, 1026.73, 1026.76, 1026.79, 1026.82, 1026.85, 1026.88, 1026.91, 1026.94, 1026.97, 1027.00, 1027.03, 1027.06, 1027.09, 1027.12, 1027.15, 1027.18, 1027.21, 1027.24, 1027.27, 1027.30, 1027.33, 1027.36, 1027.39, 1027.42, 1027.45, 1027.48, 1027.51, 1027.54, 1027.57, 1027.60, 1027.63, 1027.66, 1027.69, 1027.72, 1027.75, 1027.78, 1027.81, 1027.84, 1027.87, 1027.90, 1027.93, 1027.96, 1027.99, 1028.02, 1028.05, 1028.08, 1028.11, 1028.14, 1028.17, 1028.20, 1028.23, 1028.26, 1028.29, 1028.32, 1028.35, 1028.38, 1028.41, 1028.44, 1028.47, 1028.50, 1028.53, 1028.56, 1028.59, 1028.62, 1028.65, 1028.68, 1028.71, 1028.74, 1028.77, 1028.80, 1028.83, 1028.86, 1028.89, 1028.92, 1028.95, 1028.98, 1029.01, 1029.04, 1029.07, 1029.10, 1029.13, 1029.16, 1029.19, 1029.22, 1029.25, 1029.28, 1029.31, 1029.34, 1029.37, 1029.40, 1029.43, 1029.46, 1029.49, 1029.52, 1029.55, 1029.58, 1029.61, 1029.64, 1029.67, 1029.70, 1029.73, 1029.76, 1029.79, 1029.82, 1029.85, 1029.88, 1029.91, 1029.94, 1029.97, 1030.00, 1030.03, 1030.06, 1030.09, 1030.12, 1030.15, 1030.18, 1030.21, 1030.24, 1030.27, 1030.30, 1030.33, 1030.36, 1030.39, 1030.42, 1030.45, 1030.48, 1030.51, 1030.54, 1030.57, 1030.60, 1030.63, 1030.66, 1030.69, 1030.72, 1030.75, 1030.78, 1030.81, 1030.84, 1030.87, 1030.90, 1030.93, 1030.96, 1030.99, 1031.02, 1031.05, 1031.08, 1031.11, 1031.14, 1031.17, 1031.20, 1031.23, 1031.26, 1031.29, 1031.32, 1031.35, 1031.38, 1031.41, 1031.44, 1031.47, 1031.50, 1031.53, 1031.56, 1031.59, 1031.62, 1031.65, 1031.68, 1031.71, 1031.74, 1031.77, 1031.80, 1031.83, 1031.86, 1031.89, 1031.92, 1031.95, 1031.98, 1032.01, 1032.04, 1032.07, 1032.10, 1032.13, 1032.16, 1032.19, 1032.22, 1032.25, 1032.28, 1032.31, 1032.34, 1032.37, 1032.40, 1032.43, 1032.46, 1032.49, 1032.52, 1032.55, 1032.58, 1032.61, 1032.64, 1032.67, 1032.70, 1032.73, 1032.76, 1032.79, 1032.82, 1032.85, 1032.88, 1032.91, 1032.94, 1032.97, 1033.00, 1033.03, 1033.06, 1033.09, 1033.12, 1033.15, 1033.18, 1033.21, 1033.24, 1033.27, 1033.30, 1033.33, 1033.36, 1033.39, 1033.42, 1033.45, 1033.48, 1033.51, 1033.54, 1033.57, 1033.60, 1033.63, 1033.66, 1033.69, 1033.72, 1033.75, 1033.78, 1033.81, 1033.84, 1033.87, 1033.90, 1033.93, 1033.96, 1033.99, 1034.02, 1034.05, 1034.08, 1034.11, 1034.14, 1034.17, 1034.20, 1034.23, 1034.26, 1034.29, 1034.32, 1034.35, 1034.38, 1034.41, 1034.44, 1034.47, 1034.50, 1034.53, 1034.56, 1034.59, 1034.62, 1034.65, 1034.68, 1034.71, 1034.74, 1034.77, 1034.80, 1034.83, 1034.86, 1034.89, 1034.92, 1034.95, 1034.98, 1035.01, 1035.04, 1035.07, 1035.10, 1035.13, 1035.16, 1035.19, 1035.22, 1035.25, 1035.28, 1035.31, 1035.34, 1035.37, 1035.40, 1035.43, 1035.46, 1035.49, 1035.52, 1035.55, 1035.58, 1035.61, 1035.64, 1035.67, 1035.70, 1035.73, 1035.76, 1035.79, 1035.82, 1035.85, 1035.88, 1035.91, 1035.94, 1035.97, 1036.00, 1036.03, 1036.06, 1036.09, 1036.12, 1036.15, 1036.18, 1036.21, 1036.24, 1036.27, 1036.30, 1036.33, 1036.36, 1036.39, 1036.42, 1036.45, 1036.48, 1036.51, 1036.54, 1036.57, 1036.60, 1036.63, 1036.66, 1036.69, 1036.72, 1036.75, 1036.78, 1036.81, 1036.84, 1036.87, 1036.90, 1036.93, 1036.96, 1036.99, 1037.02, 1037.05, 1037.08, 1037.11, 1037.14, 1037.17, 1037.20, 1037.23, 1037.26, 1037.29, 1037.32, 1037.35, 1037.38, 1037.41, 1037.44, 1037.47, 1037.50, 1037.53, 1037.56, 1037.59, 1037.62, 1037.65, 1037.68, 1037.71, 1037.74, 1037.77, 1037.80, 1037.83, 1037.86, 1037.89, 1037.92, 1037.95, 1037.98, 1038.01, 1038.04, 1038.07, 1038.10, 1038.13, 1038.16, 1038.19, 1038.22, 1038.25, 1038.28, 1038.31, 1038.34, 1038.37, 1038.40, 1038.43, 1038.46, 1038.49, 1038.52, 1038.55, 1038.58, 1038.61, 1038.64, 1038.67, 1038.70, 1038.73, 1038.76, 1038.79, 1038.82, 1038.85, 1038.88, 1038.91, 1038.94, 1038.97, 1039.00, 1039.03, 1039.06, 1039.09, 1039.12, 1039.15, 1039.18, 1039.21, 1039.24, 1039.27, 1039.30, 1039.33, 1039.36, 1039.39, 1039.42, 1039.45, 1039.48, 1039.51, 1039.54, 1039.57, 1039.60, 1039.63, 1039.66, 1039.69, 1039.72, 1039.75, 1039.78, 1039.81, 1039.84, 1039.87, 1039.90, 1039.93, 1039.96, 1039.99, 1040.02, 1040.05, 1040.08, 1040.11, 1040.14, 1040.17, 1040.20, 1040.23, 1040.26, 1040.29, 1040.32, 1040.35, 1040.38, 1040.41, 1040.44, 1040.47, 1040.50, 1040.53, 1040.56, 1040.59, 1040.62, 1040.65, 1040.68, 1040.71, 1040.74, 1040.77, 1040.80, 1040.83, 1040.86, 1040.89, 1040.92, 1040.95, 1040.98, 1041.01, 1041.04, 1041.07, 1041.10, 1041.13, 1041.16, 1041.19, 1041.22, 1041.25, 1041.28, 1041.31, 1041.34, 1041.37, 1041.40, 1041.43, 1041.46, 1041.49, 1041.52, 1041.55, 1041.58, 1041.61, 1041.64, 1041.67, 1041.70, 1041.73, 1041.76, 1041.79, 1041.82, 1041.85, 1041.88, 1041.91, 1041.94, 1041.97, 1042.00, 1042.03, 1042.06, 1042.09, 1042.12, 1042.15, 1042.18, 1042.21, 1042.24, 1042.27, 1042.30, 1042.33, 1042.36, 1042.39, 1042.42, 1042.45, 1042.48, 1042.51, 1042.54, 1042.57, 1042.60, 1042.63, 1042.66, 1042.69, 1042.72, 1042.75, 1042.78, 1042.81, 1042.84, 1042.87, 1042.90, 1042.93, 1042.96, 1042.99, 1043.02, 1043.05, 1043.08, 1043.11, 1043.14, 1043.17, 1043.20, 1043.23, 1043.26, 1043.29, 1043.32, 1043.35, 1043.38, 1043.41, 1043.44, 1043.47, 1043.50, 1043.53, 1043.56, 1043.59, 1043.62, 1043.65, 1043.68, 1043.71, 1043.74, 1043.77, 1043.80, 1043.83, 1043.86, 1043.89, 1043.92, 1043.95, 1043.98, 1044.01, 1044.04, 1044.07, 1044.10, 1044.13, 1044.16, 1044.19, 1044.22, 1044.25, 1044.28, 1044.31, 1044.34, 1044.37, 1044.40, 1044.43, 1044.46, 1044.49, 1044.52, 1044.55, 1044.58, 1044.61, 1044.64, 1044.67, 1044.70, 1044.73, 1044.76, 1044.79, 1044.82, 1044.85, 1044.88, 1044.91, 1044.94, 1044.97, 1045.00, 1045.03, 1045.06, 1045.09, 1045.12, 1045.15, 1045.18, 1045.21, 1045.24, 1045.27, 1045.30, 1045.33, 1045.36, 1045.39, 1045.42, 1045.45, 1045.48, 1045.51, 1045.54, 1045.57, 1045.60, 1045.63, 1045.66, 1045.69, 1045.72, 1045.75, 1045.78, 1045.81, 1045.84, 1045.87, 1045.90, 1045.93, 1045.96, 1045.99, 1046.02, 1046.05, 1046.08, 1046.11, 1046.14, 1046.17, 1046.20, 1046.23, 1046.26, 1046.29, 1046.32, 1046.35, 1046.38, 1046.41, 1046.44, 1046.47, 1046.50, 1046.53, 1046.56, 1046.59, 1046.62, 1046.65, 1046.68, 1046.71, 1046.74, 1046.77, 1046.80, 1046.83, 1046.86, 1046.89, 1046.92, 1046.95, 1046.98, 1047.01, 1047.04, 1047.07, 1047.10, 1047.13, 1047.16, 1047.19, 1047.22, 1047.25, 1047.28, 1047.31, 1047.34, 1047.37, 1047.40, 1047.43, 1047.46, 1047.49, 1047.52, 1047.55, 1047.58, 1047.61, 1047.64, 1047.67, 1047.70, 1047.73, 1047.76, 1047.79, 1047.82, 1047.85, 1047.88, 1047.91, 1047.94, 1047.97, 1048.00, 1048.03, 1048.06, 1048.09, 1048.12, 1048.15, 1048.18, 1048.21, 1048.24, 1048.27, 1048.30, 1048.33, 1048.36, 1048.39, 1048.42, 1048.45, 1048.48, 1048.51, 1048.54, 1048.57, 1048.60, 1048.63, 1048.66, 1048.69, 1048.72, 1048.75, 1048.78, 1048.81, 1048

SOUTH LANDSCAPE PLAN SHEET L1
NORTH LANDSCAPE PLAN SHEET L2



PLANT LEGEND (for sheet L1 & L2)					
PLANT SYMBOL	BOTANICAL NAME (various - COMMON NAME)	PLANT QUANTITY	PLANT SIZE	REMARKS	
TREES					
AJ	Ardisia japonica - Red Pine	3	24" box		
AT	Abies concolor - Fir	12	18 gal.		
W	Wrightia religiosa - Tree Fern	8	24" box	including specimen	
L1	Leucophaea indica - Watermelon Tree	24	24" box		
PA	Philodendron - Philodendron	40	18 gal.	Field Only	
PE	Philodendron - Philodendron	40	18 gal.		
VA	Viburnum - Viburnum	4	24" box		
SHRUBS					
BW	Banksia laevigata - Banksia	34	1 gal.	Special 1" O.C.	
BJ	Banksia laevigata - Banksia	4	18 gal.	Special 1" O.C.	
DJ	Dodonaea viscosa - Dodonaea	10	3 gal.		
LJ	Leucophaea indica - Watermelon Tree	4	24" box	Special	
HQ	Hortensia - Hortensia	12	3 gal.		
HDP	Hortensia - Hortensia	17	3 gal.		
MDG	Morone - Morone	40	3 gal.		
MP	Morone - Morone	100	3 gal.		
PJ	Philodendron - Philodendron	20	3 gal.		
KB	Kalanchoe - Kalanchoe	37	3 gal.		
SK	Sedum - Sedum	1	24" box	Standard	
AZ	Ardisia japonica - Red Pine	40	3 gal.		
RS	Rosa - Rosa	37	3 gal.	Standard	
GROUND COVER					
Hg	Hesperis matronalis - Night-flowering Cerise	3000	100/1000	Special 1" O.C.	
LdL	Lonicera - Lonicera	50	1 gal.	Special 2" O.C.	
LdL	Lonicera - Lonicera	81	1 gal.	Special 2" O.C.	
PT	Phlox - Phlox	40	1 gal.	Special 2" O.C.	
Ta	Thymus - Thymus	1500	1/1000	Special 2" O.C.	
TV	Thymus - Thymus	100	1 gal.	Special 2" O.C.	
VT	Veronica - Veronica	100	1 gal.	Special 2" O.C.	
LdH	Lonicera - Lonicera	10000	1/1000	Standard	
VINES					
PR	Passiflora - Passiflora	4	3 gal.	Attach to wall	

ALL PLANT QUANTITIES ARE APPROXIMATE ONLY. LANDSCAPE CONTRACTOR TO FIELD VERIFY ALL CONDITIONS PRIOR TO ORDER AND INSTALLATION.



LANDSCAPE ARCHITECT
DONALD HANNAH LANDSCAPE ARCHITECTURE
3070 N. SIXTH, SUITE #103
FRESNO, CA 93710-7505
TELEPHONE: (559) 270-0333
FAX: (559) 270-0320
EMAIL: robert.dha@hclab.com

Form 4

Architecture Management Collaboration
126 Post Street, 3rd Floor
San Francisco, CA 94108
T 415.775.8748
F 415.775.8752

ST. PETER'S CATHOLIC CHURCH
LEMOORE AVENUE
LEMOORE, CALIFORNIA

Form 4 :2196.01
DHA :07-032L

TENANT

PROJECT

Job #

Sheet Name

Dates

RESPONSE TO PLANNING COMMENTS 7-16-08
ISSUE FOR SITE PLAN REVIEW 10-02-08

Description Date

Sheet L1

Architecture Management Collaboration
 126 Post Street, 3rd Floor
 San Francisco, CA 94108
 T 415.775.8748
 F 415.775.8752

TENANT

PROJECT

ST. PETER'S
 CATHOLIC CHURCH
 LEMOORE AVENUE
 LEMOORE, CALIFORNIA

Form 4 :2196.01
 DHA :07-032L

Job #

Sheet Name

Date

RESPONSE TO PLANNING COMMENTS 7-16-08
 ISSUE FOR SITE PLAN REVIEW 10-02-08

Description Date

Sheet L2

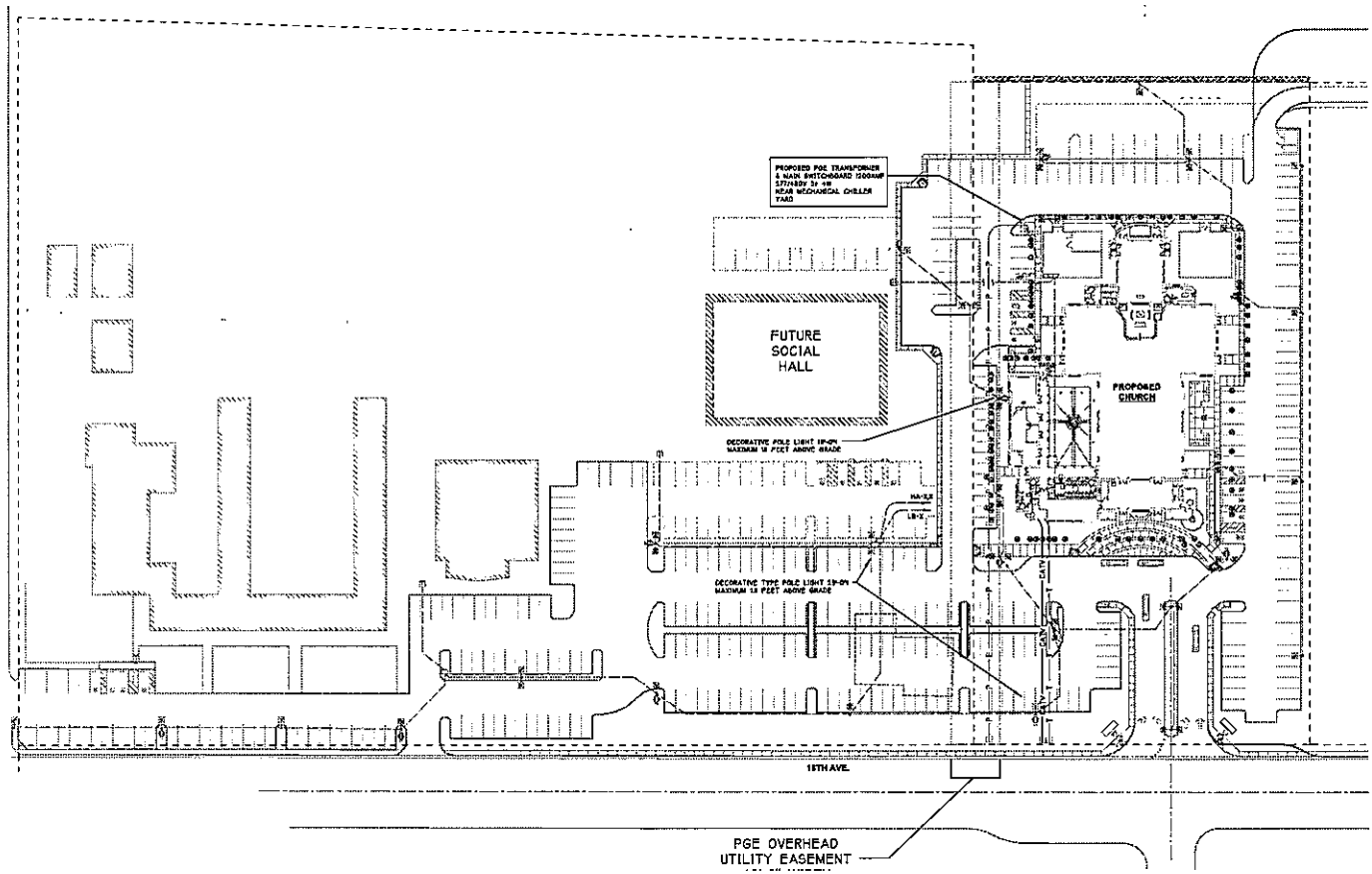
PLANT LEGEND (for sheet L1 & L2)					
PLANT SYMBOL	BOTANICAL NAME - VARIETY - COMMON NAME	PLANT QUANTITY	PLANT SIZE	PLANT SOURCE	ADVANCE
TREES					
A1	Azadirachta indica 'Indica'	2	24" tree		
AT	Abutilon 'Abutilon' 'Marianne Lesca'	12	45 gal		
W	Wisteria 'Wisteria' 'Wisteria'	6	24" tree	including specimen	
L1	Ligustrum 'Ligustrum' 'Ligustrum'	24	24" tree		
P1	Philadelphus 'Philadelphus' 'Philadelphus'	48	15 gal		Male Only
P2	Philadelphus 'Philadelphus' 'Philadelphus'	48	15 gal		
V1	Vitis 'Vitis' 'Vitis'	4	24" vine		
SHRUBS					
B1	Baccharis 'Baccharis' 'Baccharis'	24	1 gal		Space 12" O.C.
C1	Campanula 'Campanula' 'Campanula'	4	75 gal		Space to match
B2	Baccharis 'Baccharis' 'Baccharis'	16	5 gal		Space to match
L1	Ligustrum 'Ligustrum' 'Ligustrum'	4	24" tree		Inward
H1	Hesperis 'Hesperis' 'Hesperis'	12	2 gal		
H2	Hesperis 'Hesperis' 'Hesperis'	12	2 gal		
H3	Hesperis 'Hesperis' 'Hesperis'	12	2 gal		
H4	Hesperis 'Hesperis' 'Hesperis'	12	2 gal		
H5	Hesperis 'Hesperis' 'Hesperis'	12	2 gal		
H6	Hesperis 'Hesperis' 'Hesperis'	12	2 gal		
H7	Hesperis 'Hesperis' 'Hesperis'	12	2 gal		
H8	Hesperis 'Hesperis' 'Hesperis'	12	2 gal		
H9	Hesperis 'Hesperis' 'Hesperis'	12	2 gal		
H10	Hesperis 'Hesperis' 'Hesperis'	12	2 gal		
H11	Hesperis 'Hesperis' 'Hesperis'	12	2 gal		
H12	Hesperis 'Hesperis' 'Hesperis'	12	2 gal		
H13	Hesperis 'Hesperis' 'Hesperis'	12	2 gal		
H14	Hesperis 'Hesperis' 'Hesperis'	12	2 gal		
H15	Hesperis 'Hesperis' 'Hesperis'	12	2 gal		
H16	Hesperis 'Hesperis' 'Hesperis'	12	2 gal		
H17	Hesperis 'Hesperis' 'Hesperis'	12	2 gal		
H18	Hesperis 'Hesperis' 'Hesperis'	12	2 gal		
H19	Hesperis 'Hesperis' 'Hesperis'	12	2 gal		
H20	Hesperis 'Hesperis' 'Hesperis'	12	2 gal		
H21	Hesperis 'Hesperis' 'Hesperis'	12	2 gal		
H22	Hesperis 'Hesperis' 'Hesperis'	12	2 gal		
H23	Hesperis 'Hesperis' 'Hesperis'	12	2 gal		
H24	Hesperis 'Hesperis' 'Hesperis'	12	2 gal		
H25	Hesperis 'Hesperis' 'Hesperis'	12	2 gal		
H26	Hesperis 'Hesperis' 'Hesperis'	12	2 gal		
H27	Hesperis 'Hesperis' 'Hesperis'	12	2 gal		
H28	Hesperis 'Hesperis' 'Hesperis'	12	2 gal		
H29	Hesperis 'Hesperis' 'Hesperis'	12	2 gal		
H30	Hesperis 'Hesperis' 'Hesperis'	12	2 gal		
H31	Hesperis 'Hesperis' 'Hesperis'	12	2 gal		
H32	Hesperis 'Hesperis' 'Hesperis'	12	2 gal		
H33	Hesperis 'Hesperis' 'Hesperis'	12	2 gal		
H34	Hesperis 'Hesperis' 'Hesperis'	12	2 gal		
H35	Hesperis 'Hesperis' 'Hesperis'	12	2 gal		
H36	Hesperis 'Hesperis' 'Hesperis'	12	2 gal		
H37	Hesperis 'Hesperis' 'Hesperis'	12	2 gal		
H38	Hesperis 'Hesperis' 'Hesperis'	12	2 gal		
H39	Hesperis 'Hesperis' 'Hesperis'	12	2 gal		
H40	Hesperis 'Hesperis' 'Hesperis'	12	2 gal		
H41	Hesperis 'Hesperis' 'Hesperis'	12	2 gal		
H42	Hesperis 'Hesperis' 'Hesperis'	12	2 gal		
H43	Hesperis 'Hesperis' 'Hesperis'	12	2 gal		
H44	Hesperis 'Hesperis' 'Hesperis'	12	2 gal		
H45	Hesperis 'Hesperis' 'Hesperis'	12	2 gal		
H46	Hesperis 'Hesperis' 'Hesperis'	12	2 gal		
H47	Hesperis 'Hesperis' 'Hesperis'	12	2 gal		
H48	Hesperis 'Hesperis' 'Hesperis'	12	2 gal		
H49	Hesperis 'Hesperis' 'Hesperis'	12	2 gal		
H50	Hesperis 'Hesperis' 'Hesperis'	12	2 gal		
H51	Hesperis 'Hesperis' 'Hesperis'	12	2 gal		
H52	Hesperis 'Hesperis' 'Hesperis'	12	2 gal		
H53	Hesperis 'Hesperis' 'Hesperis'	12	2 gal		
H54	Hesperis 'Hesperis' 'Hesperis'	12	2 gal		
H55	Hesperis 'Hesperis' 'Hesperis'	12	2 gal		
H56	Hesperis 'Hesperis' 'Hesperis'	12	2 gal		
H57	Hesperis 'Hesperis' 'Hesperis'	12	2 gal		
H58	Hesperis 'Hesperis' 'Hesperis'	12	2 gal		
H59	Hesperis 'Hesperis' 'Hesperis'	12	2 gal		
H60	Hesperis 'Hesperis' 'Hesperis'	12	2 gal		
H61	Hesperis 'Hesperis' 'Hesperis'	12	2 gal		
H62	Hesperis 'Hesperis' 'Hesperis'	12	2 gal		
H63	Hesperis 'Hesperis' 'Hesperis'	12	2 gal		
H64	Hesperis 'Hesperis' 'Hesperis'	12	2 gal		
H65	Hesperis 'Hesperis' 'Hesperis'	12	2 gal		
H66	Hesperis 'Hesperis' 'Hesperis'	12	2 gal		
H67	Hesperis 'Hesperis' 'Hesperis'	12	2 gal		
H68	Hesperis 'Hesperis' 'Hesperis'	12	2 gal		
H69	Hesperis 'Hesperis' 'Hesperis'	12	2 gal		
H70	Hesperis 'Hesperis' 'Hesperis'	12	2 gal		
H71	Hesperis 'Hesperis' 'Hesperis'	12	2 gal		
H72	Hesperis 'Hesperis' 'Hesperis'	12	2 gal		
H73	Hesperis 'Hesperis' 'Hesperis'	12	2 gal		
H74	Hesperis 'Hesperis' 'Hesperis'	12	2 gal		
H75	Hesperis 'Hesperis' 'Hesperis'	12	2 gal		
H76	Hesperis 'Hesperis' 'Hesperis'	12	2 gal		
H77	Hesperis 'Hesperis' 'Hesperis'	12	2 gal		
H78	Hesperis 'Hesperis' 'Hesperis'	12	2 gal		
H79	Hesperis 'Hesperis' 'Hesperis'	12	2 gal		
H80	Hesperis 'Hesperis' 'Hesperis'	12	2 gal		
H81	Hesperis 'Hesperis' 'Hesperis'	12	2 gal		
H82	Hesperis 'Hesperis' 'Hesperis'	12	2 gal		
H83	Hesperis 'Hesperis' 'Hesperis'	12	2 gal		
H84	Hesperis 'Hesperis' 'Hesperis'	12	2 gal		
H85	Hesperis 'Hesperis' 'Hesperis'	12	2 gal		
H86	Hesperis 'Hesperis' 'Hesperis'	12	2 gal		
H87	Hesperis 'Hesperis' 'Hesperis'	12	2 gal		
H88	Hesperis 'Hesperis' 'Hesperis'	12	2 gal		
H89	Hesperis 'Hesperis' 'Hesperis'	12	2 gal		
H90	Hesperis 'Hesperis' 'Hesperis'	12	2 gal		
H91	Hesperis 'Hesperis' 'Hesperis'	12	2 gal		
H92	Hesperis 'Hesperis' 'Hesperis'	12	2 gal		
H93	Hesperis 'Hesperis' 'Hesperis'	12	2 gal		
H94	Hesperis 'Hesperis' 'Hesperis'	12	2 gal		
H95	Hesperis 'Hesperis' 'Hesperis'	12	2 gal		
H96	Hesperis 'Hesperis' 'Hesperis'	12	2 gal		
H97	Hesperis 'Hesperis' 'Hesperis'	12	2 gal		
H98	Hesperis 'Hesperis' 'Hesperis'	12	2 gal		
H99	Hesperis 'Hesperis' 'Hesperis'	12	2 gal		
H100	Hesperis 'Hesperis' 'Hesperis'	12	2 gal		
VINES					
V1	Vitis 'Vitis' 'Vitis'	4	2 gal		Attach to wall

ALL PLANT QUANTITIES ARE APPROXIMATE ONLY. LANDSCAPE CONTRACTOR TO FIELD VERIFY ALL CONDITIONS PRIOR TO ORDER AND INSTALLATION.

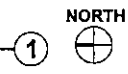
- ### GENERAL PLANTING NOTES
- THE CONTRACTOR SHALL EXAMINE THE CONDITIONS OF THE SITE PRIOR TO COMMENCEMENT OF WORK. ANY CONDITIONS THAT DIFFER FROM THOSE SHOWN ON THE PLAN SHALL BE REPORTED TO THE ARCHITECT IMMEDIATELY. THE ARCHITECT'S ACCEPTANCE OF THE CONDITIONS OF THE SITE SHALL BE FINAL.
 - THE LANDSCAPE CONTRACTOR SHALL VERIFY ALL PLANT QUANTITIES PRIOR TO INSTALLATION. ANY QUANTITIES ARE LISTED FOR THE CONFORMANCE OF THE CONTRACTOR. NUMBER OF SYMBOLS SHALL HAVE PRIORITY OVER QUANTITY GIVEN.
 - THE CONTRACTOR SHALL BE RESPONSIBLE FOR THE PREPARATION OF ALL MATERIALS TO MEET THE SPECIFICATIONS OF THE PLANT MATERIALS. PLANTS, SOIL, FERTILIZER, STAKES, GRAVEL, AND SOIL. THE CONTRACTOR SHALL BE RESPONSIBLE FOR THE PROTECTION OF ALL MATERIALS WITH THE PROJECT HAS BEEN COMPLETELY TURNED OVER TO THE OWNER.
 - ALL PLANT MATERIALS SHALL BE SUBJECT TO APPROVAL BY THE ARCHITECT. THE LANDSCAPE ARCHITECT OR OWNER'S REPRESENTATIVE PRIOR TO INSTALLATION. INSTALLED AND PROTECTED PRIOR TO BE REPLACED BY THE CONTRACTOR AT HIS OWN EXPENSE.
 - THE CONTRACTOR SHALL MAINTAIN THE SITE FOR A CONTINUED 180-DAY PERIOD OF 180 DAYS AFTER COMPLETION AND ACCEPTANCE OF THE PROJECT BY THE OWNER OR OWNER'S REPRESENTATIVE.
 - ALL BROWN TREES AND SPECIES SHALL BE SUBJECT TO APPROVAL BY THE LANDSCAPE ARCHITECT OR OWNER'S REPRESENTATIVE.
 - TREES TO BE PLANTED A MINIMUM OF 3" OF FRESH SOIL OR FRESH MULCH TO BE APPLIED TO THE SOIL. ALL TREES TO BE PLANTED IN A ROW SHALL BE PLANTED IN 3" AND 2" SPACING.
 - GROUNDCOVER SHALL BE INSTALLED CONTIGUOUSLY UNDER ALL SHRUBS PRIOR TO THE END OF THE PERIOD SPECIFIED.
 - ALL VINES SHALL BE INSTALLED WITH THE NECESSARY STAKES AND BRACES AND MAINTAINED TO THE HIGHEST QUALITY.
 - THE FOLLOWING SOIL AMENDMENTS SHOULD BE USED FOR THE PLANTING: A. 4 CUBIC YARDS PER 1000 SQ. FT. OF SOIL. B. 4 CUBIC YARDS PER 1000 SQ. FT. OF SOIL. C. 4 CUBIC YARDS PER 1000 SQ. FT. OF SOIL. D. 4 CUBIC YARDS PER 1000 SQ. FT. OF SOIL. E. 4 CUBIC YARDS PER 1000 SQ. FT. OF SOIL. F. 4 CUBIC YARDS PER 1000 SQ. FT. OF SOIL. G. 4 CUBIC YARDS PER 1000 SQ. FT. OF SOIL. H. 4 CUBIC YARDS PER 1000 SQ. FT. OF SOIL. I. 4 CUBIC YARDS PER 1000 SQ. FT. OF SOIL. J. 4 CUBIC YARDS PER 1000 SQ. FT. OF SOIL. K. 4 CUBIC YARDS PER 1000 SQ. FT. OF SOIL. L. 4 CUBIC YARDS PER 1000 SQ. FT. OF SOIL. M. 4 CUBIC YARDS PER 1000 SQ. FT. OF SOIL. N. 4 CUBIC YARDS PER 1000 SQ. FT. OF SOIL. O. 4 CUBIC YARDS PER 1000 SQ. FT. OF SOIL. P. 4 CUBIC YARDS PER 1000 SQ. FT. OF SOIL. Q. 4 CUBIC YARDS PER 1000 SQ. FT. OF SOIL. R. 4 CUBIC YARDS PER 1000 SQ. FT. OF SOIL. S. 4 CUBIC YARDS PER 1000 SQ. FT. OF SOIL. T. 4 CUBIC YARDS PER 1000 SQ. FT. OF SOIL. U. 4 CUBIC YARDS PER 1000 SQ. FT. OF SOIL. V. 4 CUBIC YARDS PER 1000 SQ. FT. OF SOIL. W. 4 CUBIC YARDS PER 1000 SQ. FT. OF SOIL. X. 4 CUBIC YARDS PER 1000 SQ. FT. OF SOIL. Y. 4 CUBIC YARDS PER 1000 SQ. FT. OF SOIL. Z. 4 CUBIC YARDS PER 1000 SQ. FT. OF SOIL. AA. 4 CUBIC YARDS PER 1000 SQ. FT. OF SOIL. AB. 4 CUBIC YARDS PER 1000 SQ. FT. OF SOIL. AC. 4 CUBIC YARDS PER 1000 SQ. FT. OF SOIL. AD. 4 CUBIC YARDS PER 1000 SQ. FT. OF SOIL. AE. 4 CUBIC YARDS PER 1000 SQ. FT. OF SOIL. AF. 4 CUBIC YARDS PER 1000 SQ. FT. OF SOIL. AG. 4 CUBIC YARDS PER 1000 SQ. FT. OF SOIL. AH. 4 CUBIC YARDS PER 1000 SQ. FT. OF SOIL. AI. 4 CUBIC YARDS PER 1000 SQ. FT. OF SOIL. AJ. 4 CUBIC YARDS PER 1000 SQ. FT. OF SOIL. AK. 4 CUBIC YARDS PER 1000 SQ. FT. OF SOIL. AL. 4 CUBIC YARDS PER 1000 SQ. FT. OF SOIL. AM. 4 CUBIC YARDS PER 1000 SQ. FT. OF SOIL. AN. 4 CUBIC YARDS PER 1000 SQ. FT. OF SOIL. AO. 4 CUBIC YARDS PER 1000 SQ. FT. OF SOIL. AP. 4 CUBIC YARDS PER 1000 SQ. FT. OF SOIL. AQ. 4 CUBIC YARDS PER 1000 SQ. FT. OF SOIL. AR. 4 CUBIC YARDS PER 1000 SQ. FT. OF SOIL. AS. 4 CUBIC YARDS PER 1000 SQ. FT. OF SOIL. AT. 4 CUBIC YARDS PER 1000 SQ. FT. OF SOIL. AU. 4 CUBIC YARDS PER 1000 SQ. FT. OF SOIL. AV. 4 CUBIC YARDS PER 1000 SQ. FT. OF SOIL. AW. 4 CUBIC YARDS PER 1000 SQ. FT. OF SOIL. AX. 4 CUBIC YARDS PER 1000 SQ. FT. OF SOIL. AY. 4 CUBIC YARDS PER 1000 SQ. FT. OF SOIL. AZ. 4 CUBIC YARDS PER 1000 SQ. FT. OF SOIL. BA. 4 CUBIC YARDS PER 1000 SQ. FT. OF SOIL. BB. 4 CUBIC YARDS PER 1000 SQ. FT. OF SOIL. BC. 4 CUBIC YARDS PER 1000 SQ. FT. OF SOIL. BD. 4 CUBIC YARDS PER 1000 SQ. FT. OF SOIL. BE. 4 CUBIC YARDS PER 1000 SQ. FT. OF SOIL. BF. 4 CUBIC YARDS PER 1000 SQ. FT. OF SOIL. BG. 4 CUBIC YARDS PER 1000 SQ. FT. OF SOIL. BH. 4 CUBIC YARDS PER 1000 SQ. FT. OF SOIL. BI. 4 CUBIC YARDS PER 1000 SQ. FT. OF SOIL. BJ. 4 CUBIC YARDS PER 1000 SQ. FT. OF SOIL. BK. 4 CUBIC YARDS PER 1000 SQ. FT. OF SOIL. BL. 4 CUBIC YARDS PER 1000 SQ. FT. OF SOIL. BM. 4 CUBIC YARDS PER 1000 SQ. FT. OF SOIL. BN. 4 CUBIC YARDS PER 1000 SQ. FT. OF SOIL. BO. 4 CUBIC YARDS PER 1000 SQ. FT. OF SOIL. BP. 4 CUBIC YARDS PER 1000 SQ. FT. OF SOIL. BQ. 4 CUBIC YARDS PER 1000 SQ. FT. OF SOIL. BR. 4 CUBIC YARDS PER 1000 SQ. FT. OF SOIL. BS. 4 CUBIC YARDS PER 1000 SQ. FT. OF SOIL. BT. 4 CUBIC YARDS PER 1000 SQ. FT. OF SOIL. BU. 4 CUBIC YARDS PER 1000 SQ. FT. OF SOIL. BV. 4 CUBIC YARDS PER 1000 SQ. FT. OF SOIL. BV. 4 CUBIC YARDS PER 1000 SQ. FT. OF SOIL. BW. 4 CUBIC YARDS PER 1000 SQ. FT. OF SOIL. BX. 4 CUBIC YARDS PER 1000 SQ. FT. OF SOIL. BY. 4 CUBIC YARDS PER 1000 SQ. FT. OF SOIL. BZ. 4 CUBIC YARDS PER 1000 SQ. FT. OF SOIL. CA. 4 CUBIC YARDS PER 1000 SQ. FT. OF SOIL. CB. 4 CUBIC YARDS PER 1000 SQ. FT. OF SOIL. CC. 4 CUBIC YARDS PER 1000 SQ. FT. OF SOIL. CD. 4 CUBIC YARDS PER 1000 SQ. FT. OF SOIL. CE. 4 CUBIC YARDS PER 1000 SQ. FT. OF SOIL. CF. 4 CUBIC YARDS PER 1000 SQ. FT. OF SOIL. CG. 4 CUBIC YARDS PER 1000 SQ. FT. OF SOIL. CH. 4 CUBIC YARDS PER 1000 SQ. FT. OF SOIL. CI. 4 CUBIC YARDS PER 1000 SQ. FT. OF SOIL. CJ. 4 CUBIC YARDS PER 1000 SQ. FT. OF SOIL. CK. 4 CUBIC YARDS PER 1000 SQ. FT. OF SOIL. CL. 4 CUBIC YARDS PER 1000 SQ. FT. OF SOIL. CM. 4 CUBIC YARDS PER 1000 SQ. FT. OF SOIL. CN. 4 CUBIC YARDS PER 1000 SQ. FT. OF SOIL. CO. 4 CUBIC YARDS PER 1000 SQ. FT. OF SOIL. CP. 4 CUBIC YARDS PER 1000 SQ. FT. OF SOIL. CQ. 4 CUBIC YARDS PER 1000 SQ. FT. OF SOIL. CR. 4 CUBIC YARDS PER 1000 SQ. FT. OF SOIL. CS. 4 CUBIC YARDS PER 1000 SQ. FT. OF SOIL. CT. 4 CUBIC YARDS PER 1000 SQ. FT. OF SOIL. CU. 4 CUBIC YARDS PER 1000 SQ. FT. OF SOIL. CV. 4 CUBIC YARDS PER 1000 SQ. FT. OF SOIL. CW. 4 CUBIC YARDS PER 1000 SQ. FT. OF SOIL. CX. 4 CUBIC YARDS PER 1000 SQ. FT. OF SOIL. CY. 4 CUBIC YARDS PER 1000 SQ. FT. OF SOIL. CZ. 4 CUBIC YARDS PER 1000 SQ. FT. OF SOIL. DA. 4 CUBIC YARDS PER 1000 SQ. FT. OF SOIL. DB. 4 CUBIC YARDS PER 1000 SQ. FT. OF SOIL. DC. 4 CUBIC YARDS PER 1000 SQ. FT. OF SOIL. DD. 4 CUBIC YARDS PER 1000 SQ. FT. OF SOIL. DE. 4 CUBIC YARDS PER 1000 SQ. FT. OF SOIL. DF. 4 CUBIC YARDS PER 1000 SQ. FT. OF SOIL. DG. 4 CUBIC YARDS PER 1000 SQ. FT. OF SOIL. DH. 4 CUBIC YARDS PER 1000 SQ. FT. OF SOIL. DI. 4 CUBIC YARDS PER 1000 SQ. FT. OF SOIL. DJ. 4 CUBIC YARDS PER 1000 SQ. FT. OF SOIL. DK. 4 CUBIC YARDS PER 1000 SQ. FT. OF SOIL. DL. 4 CUBIC YARDS PER 1000 SQ. FT. OF SOIL. DM. 4 CUBIC YARDS PER 1000 SQ. FT. OF SOIL. DN. 4 CUBIC YARDS PER 1000 SQ. FT. OF SOIL. DO. 4 CUBIC YARDS PER 1000 SQ. FT. OF SOIL. DP. 4 CUBIC YARDS PER 1000 SQ. FT. OF SOIL. DQ. 4 CUBIC YARDS PER 1000 SQ. FT. OF SOIL. DR. 4 CUBIC YARDS PER 1000 SQ. FT. OF SOIL. DS. 4 CUBIC YARDS PER 1000 SQ. FT. OF SOIL. DT. 4 CUBIC YARDS PER 1000 SQ. FT. OF SOIL. DU. 4 CUBIC YARDS PER 1000 SQ. FT. OF SOIL. DV. 4 CUBIC YARDS PER 1000 SQ. FT. OF SOIL. DV. 4 CUBIC YARDS PER 1000 SQ. FT. OF SOIL. DW. 4 CUBIC YARDS PER 1000 SQ. FT. OF SOIL. DX. 4 CUBIC YARDS PER 1000 SQ. FT. OF SOIL. DY. 4 CUBIC YARDS PER 1000 SQ. FT. OF SOIL. DZ. 4 CUBIC YARDS PER 1000 SQ. FT. OF SOIL. EA. 4 CUBIC YARDS PER 1000 SQ. FT. OF SOIL. EB. 4 CUBIC YARDS PER 1000 SQ. FT. OF SOIL. EC. 4 CUBIC YARDS PER 1000 SQ. FT. OF SOIL. ED. 4 CUBIC YARDS PER 1000 SQ. FT. OF SOIL. EE. 4 CUBIC YARDS PER 1000 SQ. FT. OF SOIL. EF. 4 CUBIC YARDS PER 1000 SQ. FT. OF SOIL. EG. 4 CUBIC YARDS PER 1000 SQ. FT. OF SOIL. EH. 4 CUBIC YARDS PER 1000 SQ. FT. OF SOIL. EI. 4 CUBIC YARDS PER 1000 SQ. FT. OF SOIL. EJ. 4 CUBIC YARDS PER 1000 SQ. FT. OF SOIL. EK. 4 CUBIC YARDS PER 1000 SQ. FT. OF SOIL. EL. 4 CUBIC YARDS PER 1000 SQ. FT. OF SOIL. EM. 4 CUBIC YARDS PER 1000 SQ. FT. OF SOIL. EN. 4 CUBIC YARDS PER 1000 SQ. FT. OF SOIL. EO. 4 CUBIC YARDS PER 1000 SQ. FT. OF SOIL. EP. 4 CUBIC YARDS PER 1000 SQ. FT. OF SOIL. EQ. 4 CUBIC YARDS PER 1000 SQ. FT. OF SOIL. ER. 4 CUBIC YARDS PER 1000 SQ. FT. OF SOIL. ES. 4 CUBIC YARDS PER 1000 SQ. FT. OF SOIL. ET. 4 CUBIC YARDS PER 1000 SQ. FT. OF SOIL. EU. 4 CUBIC YARDS PER 1000 SQ. FT. OF SOIL. EV. 4 CUBIC YARDS PER 1000 SQ. FT. OF SOIL. EV. 4 CUBIC YARDS PER 1000 SQ. FT. OF SOIL. EW. 4 CUBIC YARDS PER 1000 SQ. FT. OF SOIL. EX. 4 CUBIC YARDS PER 1000 SQ. FT. OF SOIL. EY. 4 CUBIC YARDS PER 1000 SQ. FT. OF SOIL. EZ. 4 CUBIC YARDS PER 1000 SQ. FT. OF SOIL. FA. 4 CUBIC YARDS PER 1000 SQ. FT. OF SOIL. FB. 4 CUBIC YARDS PER 1000 SQ. FT. OF SOIL. FC. 4 CUBIC YARDS PER 1000 SQ. FT. OF SOIL. FD. 4 CUBIC YARDS PER 1000 SQ. FT. OF SOIL. FE. 4 CUBIC YARDS PER 1000 SQ. FT. OF SOIL. FF. 4 CUBIC YARDS PER 1000 SQ. FT. OF SOIL. FG. 4 CUBIC YARDS PER 1000 SQ. FT. OF SOIL. FH. 4 CUBIC YARDS PER 1000 SQ. FT. OF SOIL. FI. 4 CUBIC YARDS PER 1000 SQ. FT. OF SOIL. FJ. 4 CUBIC YARDS PER 1000 SQ. FT. OF SOIL. FK. 4 CUBIC YARDS PER 1000 SQ. FT. OF SOIL. FL. 4 CUBIC YARDS PER 1000 SQ. FT. OF SOIL. FM. 4 CUBIC YARDS PER 1000 SQ. FT. OF SOIL. FN. 4 CUBIC YARDS PER 1000 SQ. FT. OF SOIL. FO. 4 CUBIC YARDS PER 1000 SQ. FT. OF SOIL. FP. 4 CUBIC YARDS PER 1000 SQ. FT. OF SOIL. FQ. 4 CUBIC YARDS PER 1000 SQ. FT. OF SOIL. FR. 4 CUBIC YARDS PER 1000 SQ. FT. OF SOIL. FS. 4 CUBIC YARDS PER 1000 SQ. FT. OF SOIL. FT. 4 CUBIC YARDS PER 1000 SQ. FT. OF SOIL. FU. 4 CUBIC YARDS PER 1000 SQ. FT. OF SOIL. FV. 4 CUBIC YARDS PER 1000 SQ. FT. OF SOIL. FV. 4 CUBIC YARDS PER 1000 SQ. FT. OF SOIL. FW. 4 CUBIC YARDS PER 1000 SQ. FT. OF SOIL. FX. 4 CUBIC YARDS PER 1000 SQ. FT. OF SOIL. FY. 4 CUBIC YARDS PER 1000 SQ. FT. OF SOIL. FZ. 4 CUBIC YARDS PER 1000 SQ. FT. OF SOIL. GA. 4 CUBIC YARDS PER 1000 SQ. FT. OF SOIL. GB. 4 CUBIC YARDS PER 1000 SQ. FT. OF SOIL. GC. 4 CUBIC YARDS PER 1000 SQ. FT. OF SOIL. GD. 4 CUBIC YARDS PER 1000 SQ. FT



126 Post Street, 3rd Floor
 San Francisco, CA 94108
 T 415.775.8748
 F 415.775.8752



ELECTRICAL SITE PLAN
 SCALE: 1" = 40' - 0"



TENANT
 PROJECT
 ST. PETER'S CATHOLIC CHURCH
 LEMOORE AVENUE
 LEMOORE, CALIFORNIA

Job #
 2196.01

Sheet Name
 ELECTRICAL SITE PLAN

Dates

RESPONSE TO PLANNING COMMENTS	12-14-08
ISSUE FOR SITE PLAN REVIEW	10-22-08

Description	Date
2-Engineering Corporation	
Professional Engineer	
2008 S. 104th Ave.	
FRISCO, CA 94578	
(925) 252-8800	
Fax: (925) 252-8804	
www.2-engineering.com	

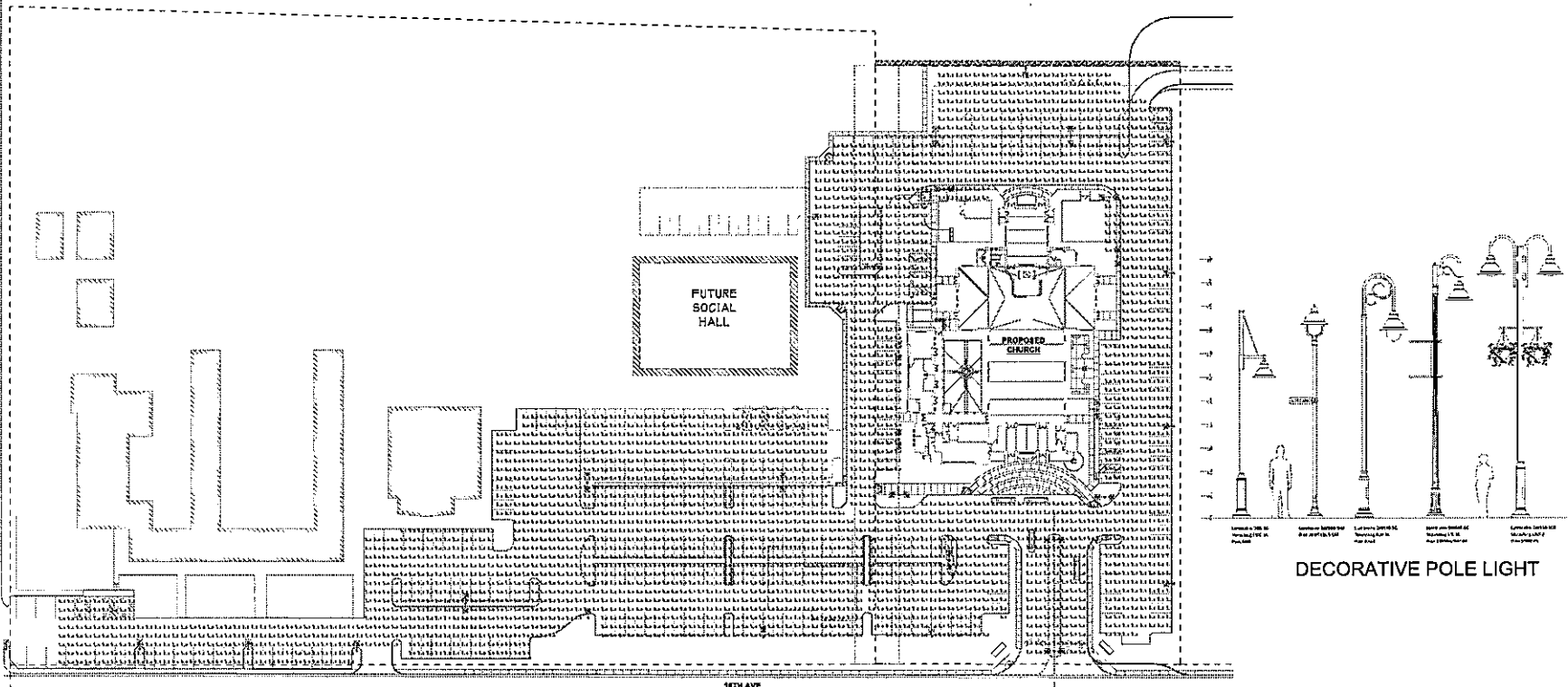


800-227-2800

E-1

Sheet #

126 Post Street, 3rd Floor
 San Francisco, CA 94108
 T 415.775.8748
 F 415.775.8752



TENANT
 PROJECT
 ST. PETER'S CATHOLIC CHURCH
 LEMOORE AVENUE
 LEMOORE, CALIFORNIA

2196.01 Job #

DECORATIVE POLE LIGHT

PHOTOMETRIC CALCULATION Sheet Name

Date

RESPONSE TO PLANNING COMMENTS 2/16/24
 SAVE FOR RTE PLAN REVIEW 10-01-24

Description Date

PHOTOMETRIC CALCULATION

SCALE: 1" = 10' - 0"



Calculation Summary							
Layer	CalcType	Units	Avg	Max	Min	(Avg/Min)	Max/Min
20 Feet path	Illuminance	fc	1.04	2.7	0.2	15.20	13.50
18 Feet path	Illuminance	fc	1.60	3.7	0.3	15.33	12.33

PHOTOMETRIC DATA NOTE
 PHOTOMETRIC CALCULATION SHOWN ON THIS PLAN IS CALCULATED FOR REPRESENTATIVE ONLY.
 THE PHOTOMETRIC ANALYSIS OF PHOTOMETRIC PLAN IS CALCULATED FROM ASSUMPTIONS THAT MAY DIFFER MATERIALLY FROM ACTUAL PHOTOMETRIC LUMEN INSTALLATIONS. ONLY PHOTOMETRIC DATA IS BASED ON MANUAL VALUES FOR VOLTAGE, BALLASTS, AND LAMP. OWNER SHALL PROVIDE LUMEN DATA, LAMP DATA, INSTALLATION, SITE, AND ALL OTHER RELEVANT FACTORS. THESE DATA AND RELY THEREON FOR ANY AND ALL PURPOSES. VARIATIONS IN THESE FACTORS MAY CAUSE THE RESULTS TO VARY.
 IT IS THE INTENT OF THE ARCHITECT/ENGINEER TO COMPLY WITH LOCAL ORDINANCES FOR ANY AND ALL PURPOSES. APPROVAL OF THESE PLANS SHALL RELEASE THE ARCHITECT/ENGINEER OF FUTURE COMPLIANCE OF THESE ORDINANCES.

